



**AMS**  
American Meteorological Society

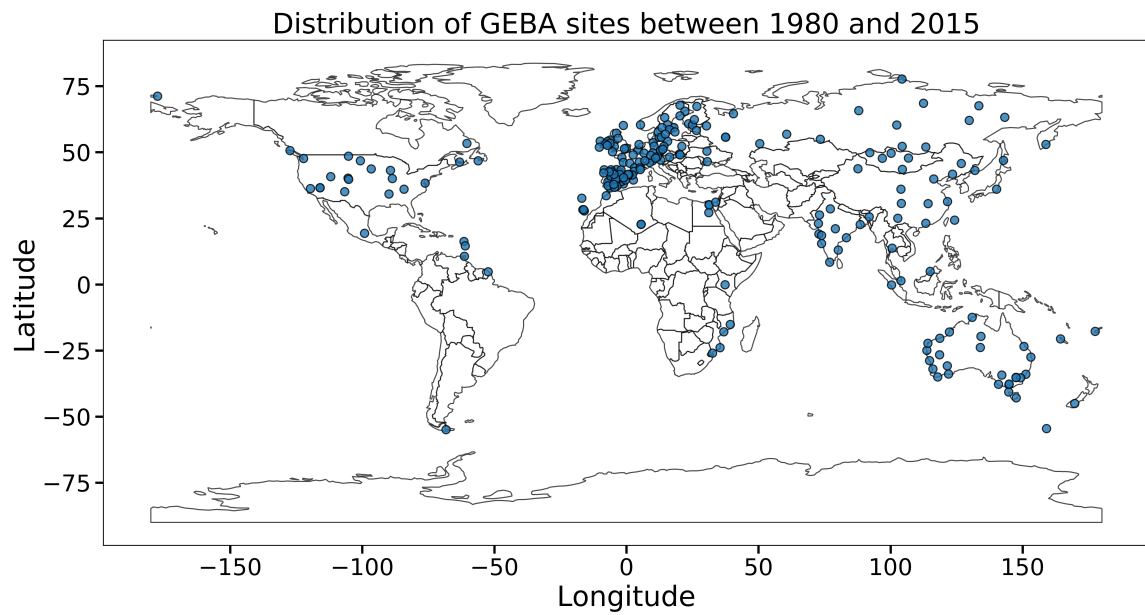
## Supplemental Material

© Copyright 2021 [American Meteorological Society](https://www.ametsoc.org) (AMS)

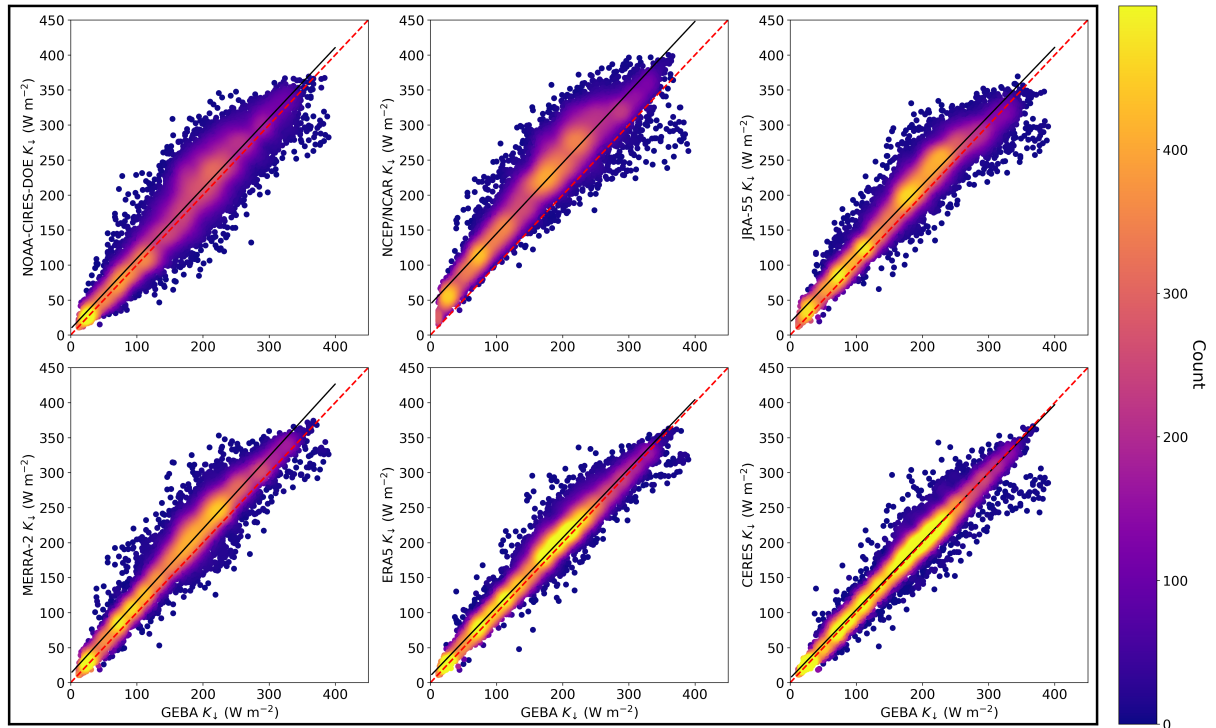
For permission to reuse any portion of this work, please contact [permissions@ametsoc.org](mailto:permissions@ametsoc.org). Any use of material in this work that is determined to be “fair use” under Section 107 of the U.S. Copyright Act (17 USC §107) or that satisfies the conditions specified in Section 108 of the U.S. Copyright Act (17 USC §108) does not require AMS’s permission. Republication, systematic reproduction, posting in electronic form, such as on a website or in a searchable database, or other uses of this material, except as exempted by the above statement, requires written permission or a license from AMS. All AMS journals and monograph publications are registered with the Copyright Clearance Center (<https://www.copyright.com>). Additional details are provided in the AMS Copyright Policy statement, available on the AMS website (<https://www.ametsoc.org/PUBSCopyrightPolicy>).

## LIST OF FIGURES

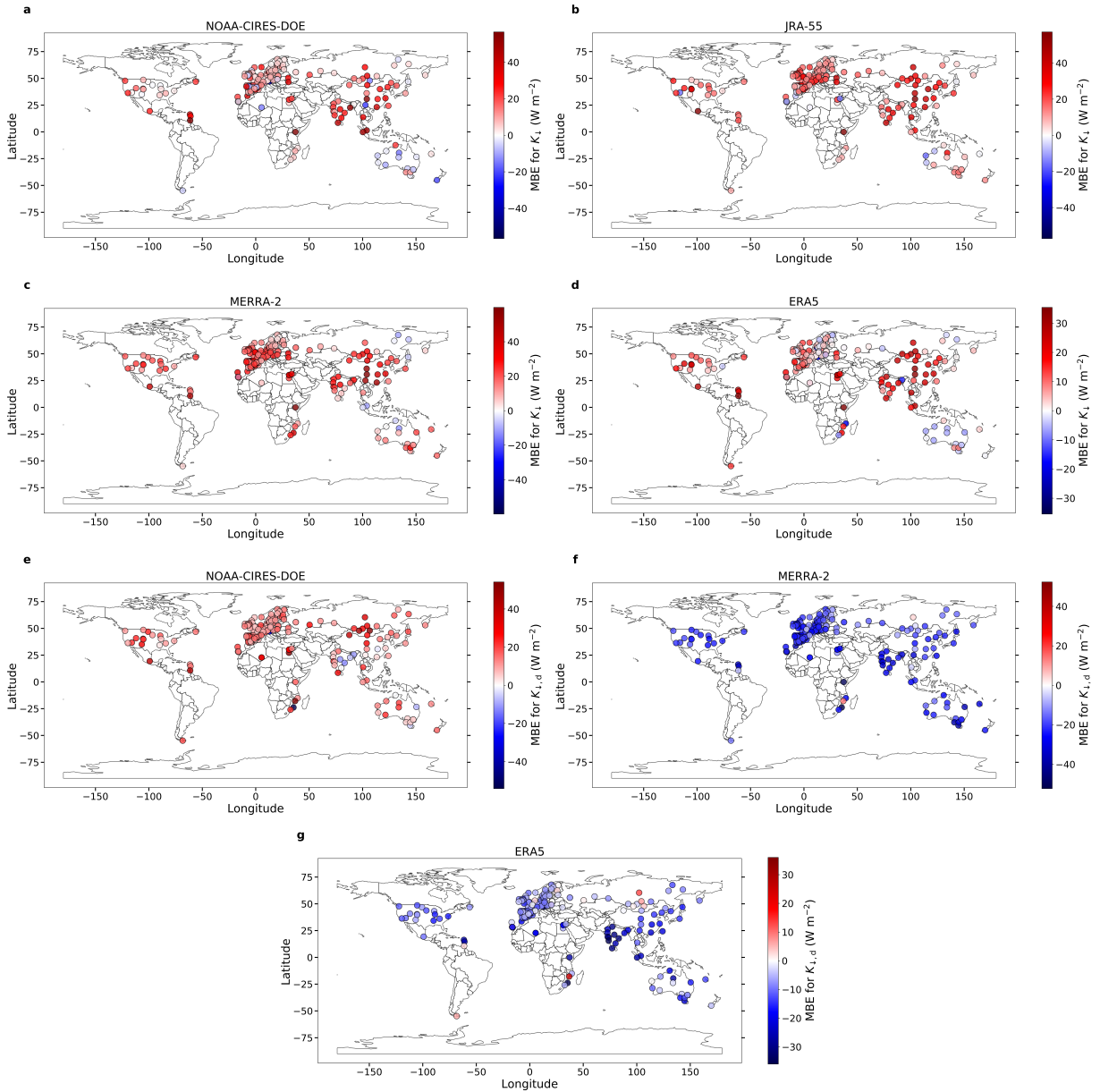
<b>Fig. S1.</b> Geographic distribution of all the GEBA sites used in this study. The sites used for Common Period I (2001-2015) are shown in Fig. S3. . . . .	2
<b>Fig. S2.</b> Evaluations of monthly mean incoming shortwave radiation ( $K_{\downarrow}$ ) at the surface of gridded reanalysis and CERES products using all common GEBA observations for Common Period I (2001-2015). The red dashed lines represent the 1:1 relationship. Color indicates data density. Statistical summaries of the evaluations are in Table 2 of the main text. . . . .	3
<b>Fig. S3.</b> Site-level mean bias error (MBE) in incoming shortwave radiation ( $K_{\downarrow}$ ) at the surface for <b>a</b> NOAA-CIRES-DOE, <b>b</b> JRA-55, <b>c</b> MERRA-2, and <b>d</b> ERA5 gridded data compared to common GEBA observations for Common Period I (2001-2015). Sub-figures <b>e</b> , <b>f</b> , and <b>g</b> show the corresponding MBE in incoming diffuse radiation ( $K_{\downarrow,b}$ ) at the surface for NOAA-CIRES-DOE, MERRA-2, and ERA5, respectively. . . . .	4
<b>Fig. S4.</b> Grid-wise difference in incoming shortwave radiation ( $K_{\downarrow}$ ) at surface between CERES data and <b>a</b> NOAA-CIRES, <b>b</b> JRA-55, <b>c</b> MERRA-2, and <b>d</b> ERA5, respectively for Common Period I (2001-2015). . . . .	5
<b>Fig. S5.</b> Spatial distribution of cloud cover in <b>a</b> NOAA-CIRES, <b>b</b> NCEP/NCAR, <b>c</b> JRA-55, <b>d</b> MERRA-2, <b>e</b> ERA5, and <b>f</b> CERES for Common Period I (2001-2015). . . . .	6
<b>Fig. S6.</b> Associations between annual average percentage cloud cover and surface radiation fields (incident diffuse radiation $K_{\downarrow,d}$ and direct beam radiation $K_{\downarrow,b}$ ) for Common Period I (2001-2015) for each of the gridded products. The lines of best fit and their equations are shown.	7



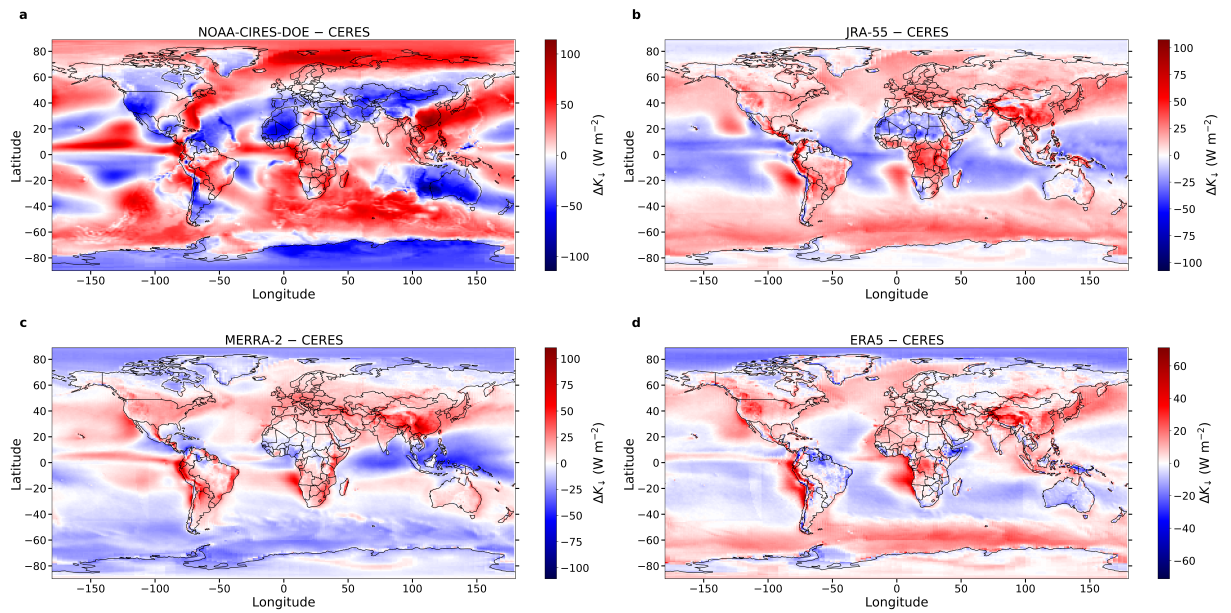
1 Fig. S1. Geographic distribution of all the GEBA sites used in this study. The sites used for Common Period  
2 I (2001-2015) are shown in Fig. S3.



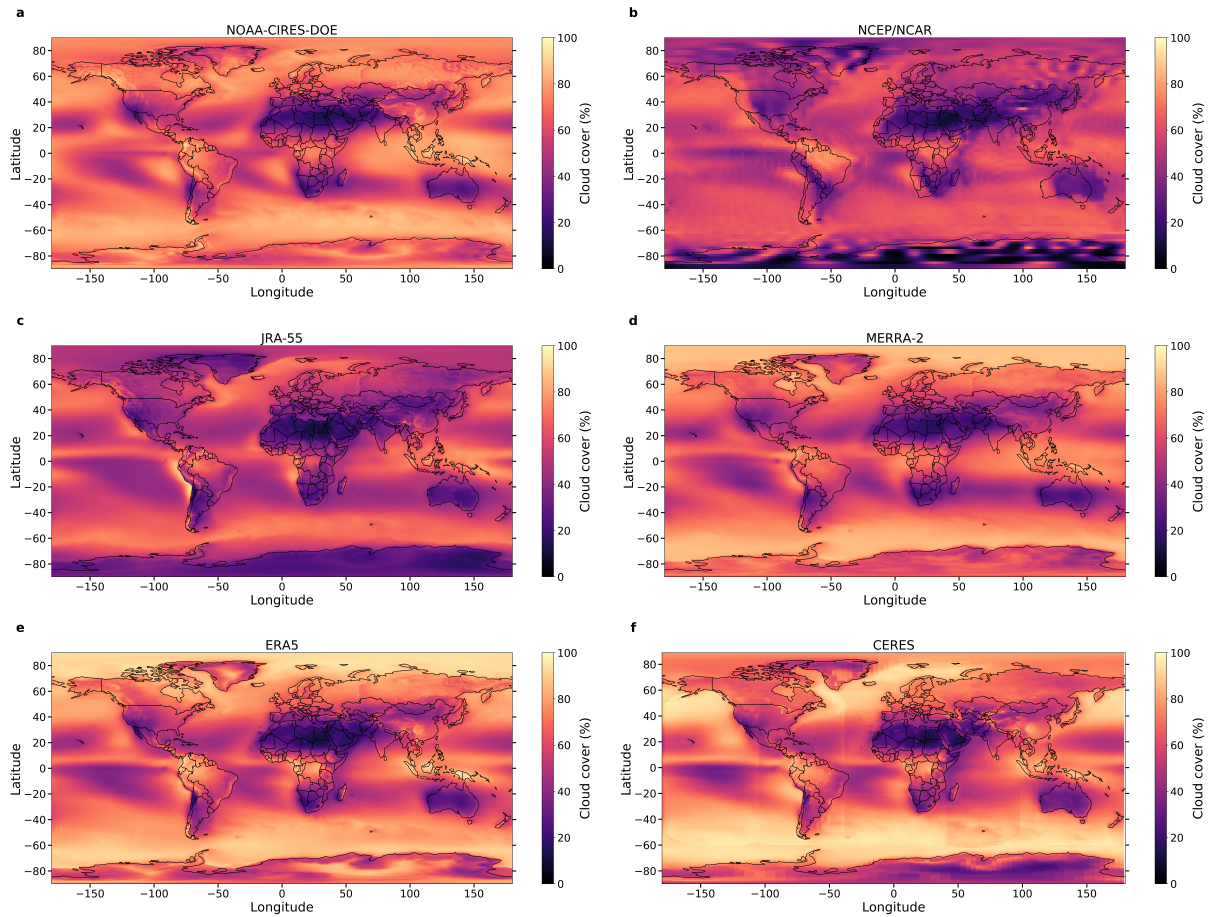
3 Fig. S2. Evaluations of monthly mean incoming shortwave radiation ( $K_{\downarrow}$ ) at the surface of gridded reanalysis  
 4 and CERES products using all common GEBA observations for Common Period I (2001-2015). The red dashed  
 5 lines represent the 1:1 relationship. Color indicates data density. Statistical summaries of the evaluations are in  
 6 Table 2 of the main text.



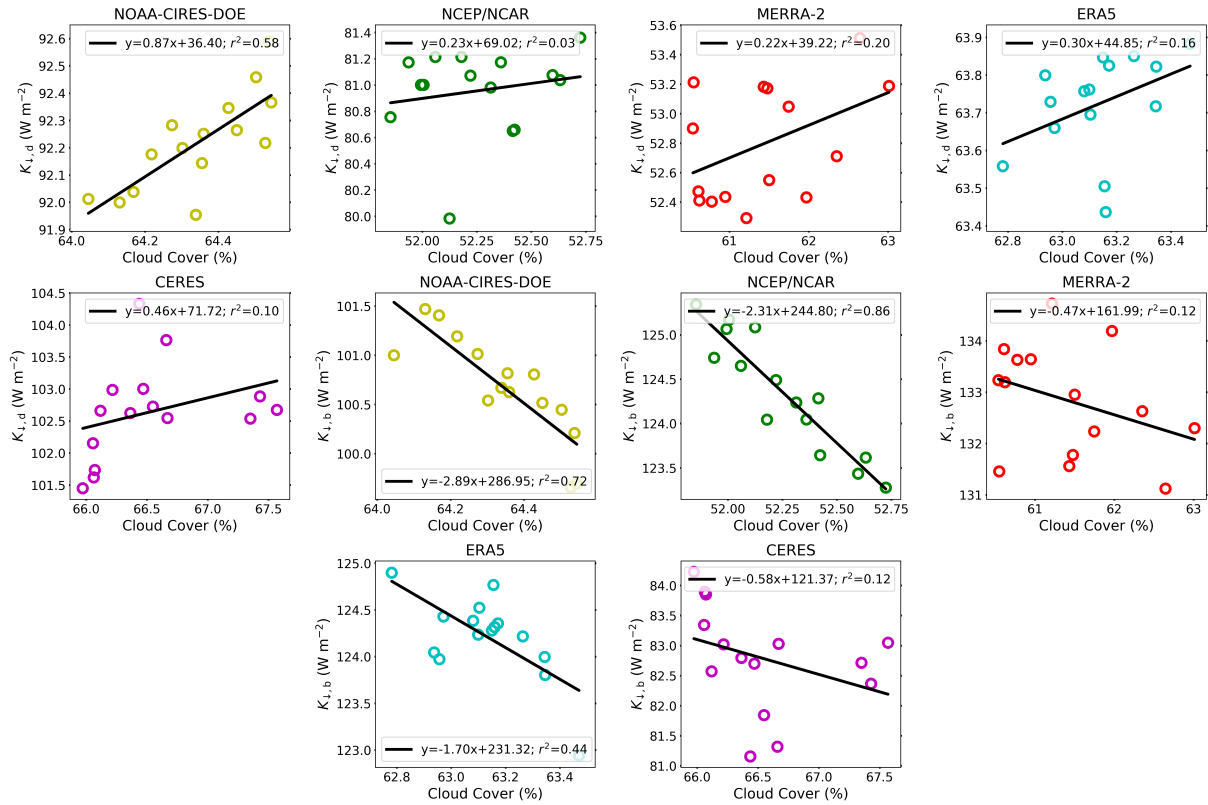
7 Fig. S3. Site-level mean bias error (MBE) in incoming shortwave radiation ( $K_{\downarrow}$ ) at the surface for **a** NOAA-  
 8 CIRES-DOE, **b** JRA-55, **c** MERRA-2, and **d** ERA5 gridded data compared to common GEBA observations  
 9 for Common Period I (2001-2015). Sub-figures **e**, **f**, and **g** show the corresponding MBE in incoming diffuse  
 10 radiation ( $K_{\downarrow,d}$ ) at the surface for NOAA-CIRES-DOE, MERRA-2, and ERA5, respectively.



11 Fig. S4. Grid-wise difference in incoming shortwave radiation ( $K_{\downarrow}$ ) at surface between CERES data and **a**  
 12 NOAA-CIRES, **b** JRA-55, **c** MERRA-2, and **d** ERA5, respectively for Common Period I (2001-2015).



13 Fig. S5. Spatial distribution of cloud cover in **a** NOAA-CIRES, **b** NCEP/NCAR, **c** JRA-55, **d** MERRA-2, **e**  
 14 ERA5, and **f** CERES for Common Period I (2001-2015).



15 Fig. S6. Associations between annual average percentage cloud cover and surface radiation fields (incident  
 16 diffuse radiation  $K_{\downarrow,d}$  and direct beam radiation  $K_{\downarrow,b}$ ) for Common Period I (2001-2015) for each of the gridded  
 17 products. The lines of best fit and their equations are shown.