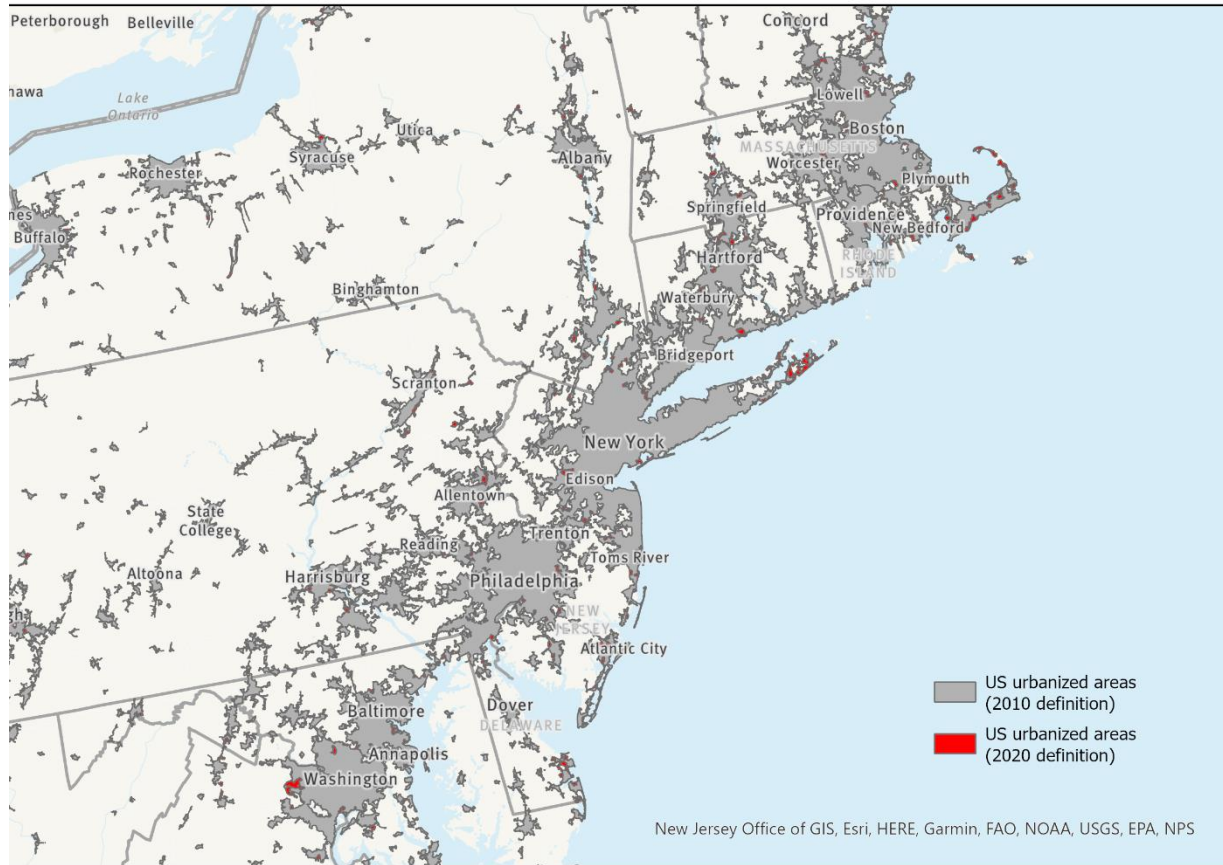
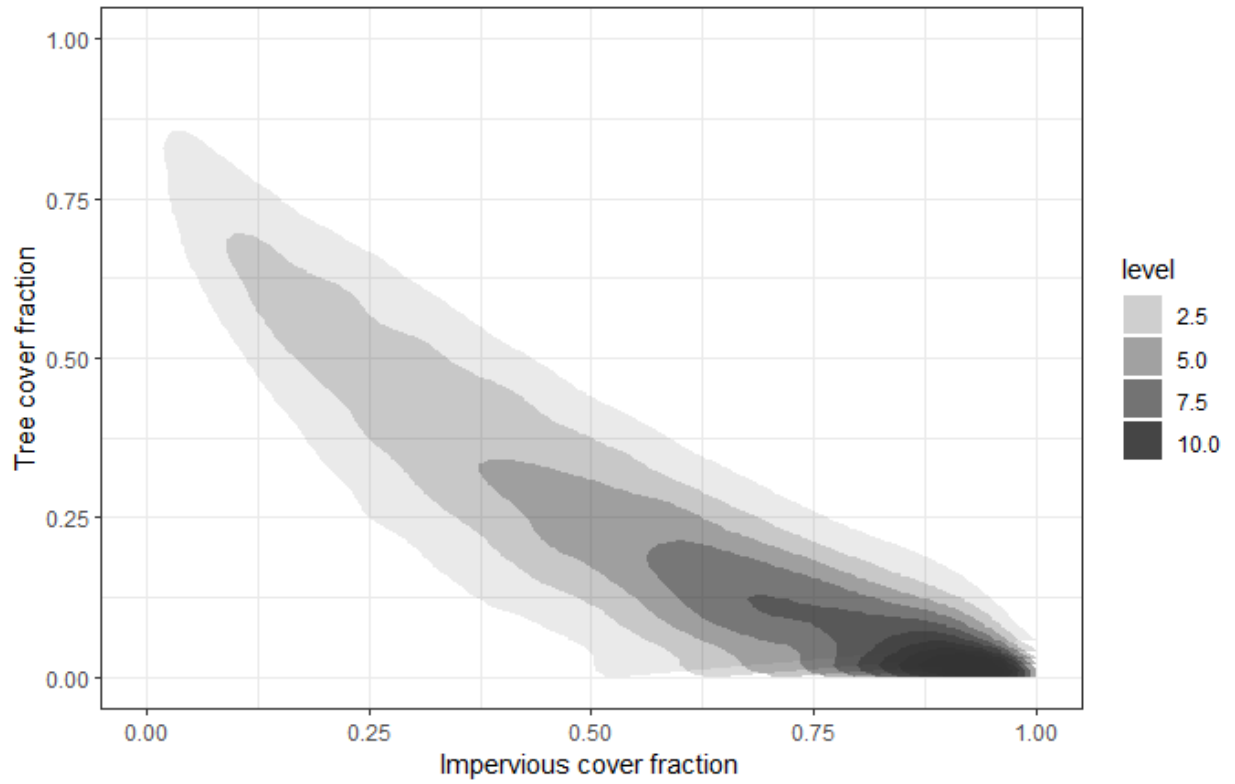


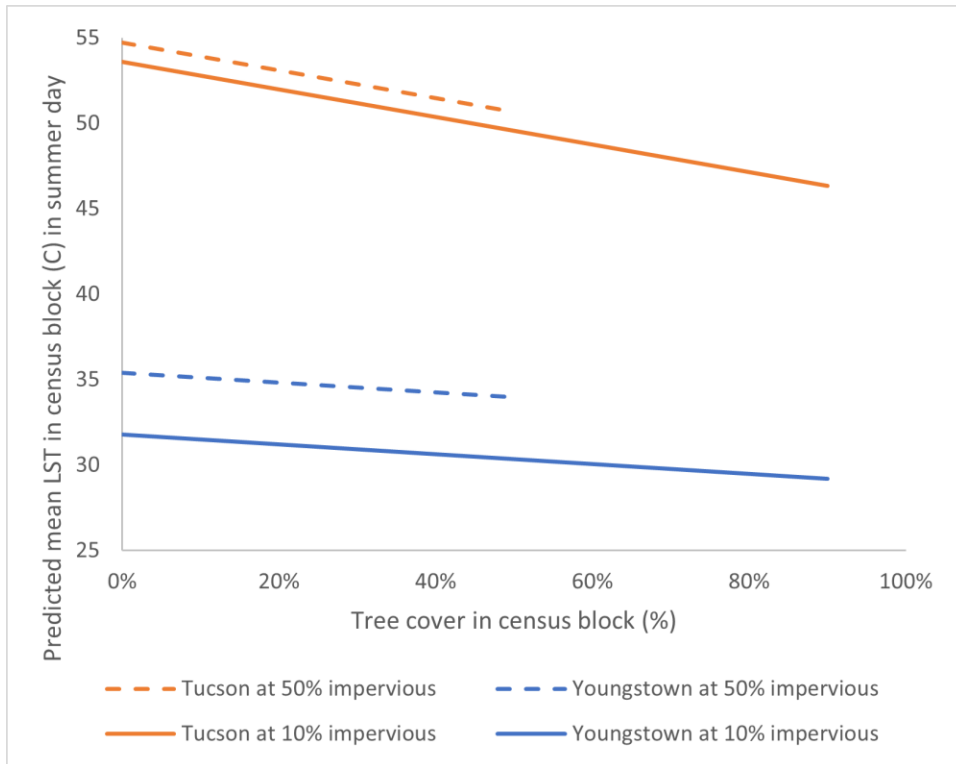
Supplementary information



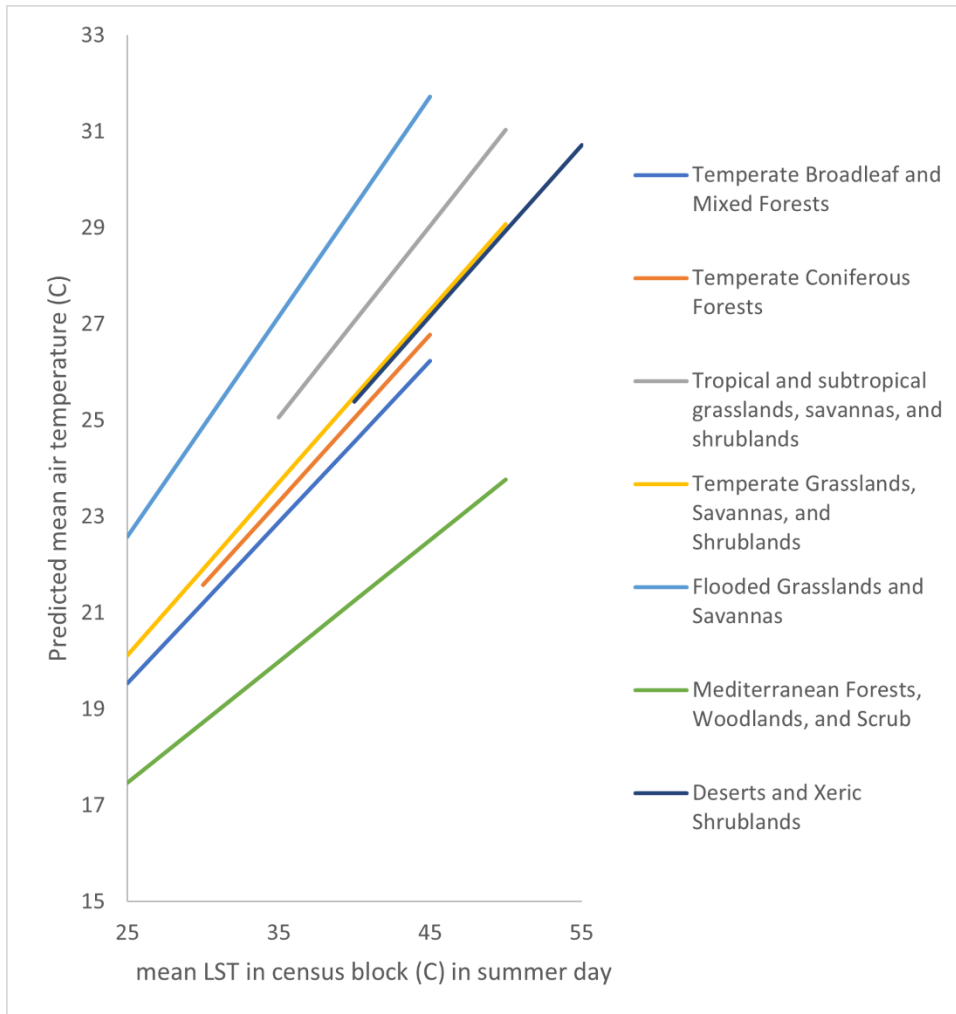
Supplementary Figure 1: Changes between US urban definition in 2010 and 2020. Grey areas are urbanized areas within the 2010 urban area definition by the US Census Bureau, and so these areas in our sample urbanized regions have mapped urban tree canopy. Red areas are areas newly designated as urban within the 2020 urban area definition, and so lack tree canopy maps for use in our study.



Supplementary Figure 2: Impervious surface cover and tree cover for New York City urbanized area. The density of points is shown with a 2-dimensional kernel density estimation, with darker colors indicating a greater number of points.



Supplementary Figure 3- Predicted mean LST in a census block on a summer day (Celsius) as a function of tree cover (%). Shown are two example urbanized area, one from the Arid category (Tucson) and one from the Mesic category (Youngstown). Note that each urbanized area has its own intercept in the empirical regression model. Predicted mean LST for both urbanized areas is shown at 10% and 50% impervious surface cover. Only the range of observed tree cover values is shown at each impervious level.



Supplementary Figure 4- Predicted mean air temperature (Celsius) in a census block on a summer day based upon observed LST (Celsius) nearby. The empirical regression was done by biome, with each biome allowed to have a different slope. Only the range of observed LST values is shown for each biome.

Supplementary Table 1- Current conditions and changes in current conditions under the 5% target tree planting scenario, for each urbanized area and each impervious surface category. Data are sorted by the name of the urbanized area (abbreviated in some cases from the official name of the US Census Bureau for space). Current conditions shown include the tree cover, impervious surface cover, and LST. Conditions under the 5% target tree planting scenario shown include the realized change in tree cover and impervious surfaces, the estimated change in LST, and the estimated change in air temperature. For reference, the aridity category and biome of each urbanized area is also shown, for ease of comparison with Tables 5, 6, and 7.

Urbanized area	Current conditions				With target of 5% increase in tree cover				Climate variables	
	Imp. surface class	Tree cover	Imp. surface	LST (°C)	Δ Tree cover	Δ Imp. surface	ΔLST	Δ Air temp. (°C)	Aridity	Biome
Akron, OH	1	42.4%	12.3%	29.4	4.6%	-0.6%	-0.19	-0.06	Mesic	Temperate Broadleaf and Mixed Forests
Akron, OH	2	32.4%	29.9%	32.0	4.6%	-1.4%	-0.26	-0.09	Mesic	Temperate Broadleaf and Mixed Forests
Akron, OH	3	21.5%	49.5%	34.3	4.6%	-2.3%	-0.34	-0.11	Mesic	Temperate Broadleaf and Mixed Forests
Akron, OH	4	12.0%	66.4%	36.0	4.5%	-3.0%	-0.40	-0.13	Mesic	Temperate Broadleaf and Mixed Forests
Akron, OH	5	3.1%	85.9%	39.0	3.7%	-3.2%	-0.40	-0.13	Mesic	Temperate Broadleaf and Mixed Forests
Albany, NY	1	49.1%	12.7%	30.0	4.7%	-0.6%	-0.19	-0.06	Mesic	Temperate Broadleaf and Mixed Forests
Albany, NY	2	33.7%	29.7%	33.2	4.7%	-1.4%	-0.26	-0.09	Mesic	Temperate Broadleaf and Mixed Forests
Albany, NY	3	18.7%	49.9%	35.8	4.7%	-2.3%	-0.35	-0.12	Mesic	Temperate Broadleaf and Mixed Forests

Albany, NY	4	9.3%	69.1%	37.7	4.6%	-3.2%	-0.42	-0.14	Mesic	Temperate Broadleaf and Mixed Forests
Albany, NY	5	2.6%	85.9%	39.7	4.1%	-3.5%	-0.43	-0.15	Mesic	Temperate Broadleaf and Mixed Forests
Albuquerque, NM	1	5.2%	10.8%	47.1	4.6%	-0.5%	-0.38	-0.14	Arid	Deserts and Xeric Shrublands
Albuquerque, NM	2	5.3%	31.7%	48.3	4.5%	-1.4%	-0.40	-0.14	Arid	Deserts and Xeric Shrublands
Albuquerque, NM	3	4.9%	50.2%	48.6	4.4%	-2.2%	-0.41	-0.15	Arid	Deserts and Xeric Shrublands
Albuquerque, NM	4	2.9%	67.1%	49.6	4.2%	-2.8%	-0.42	-0.15	Arid	Deserts and Xeric Shrublands
Albuquerque, NM	5	1.9%	83.2%	49.8	3.8%	-3.2%	-0.39	-0.14	Arid	Deserts and Xeric Shrublands
Allentown, PA--NJ	1	41.6%	11.0%	31.1	4.7%	-0.5%	-0.18	-0.06	Mesic	Temperate Broadleaf and Mixed Forests
Allentown, PA--NJ	2	26.4%	30.5%	34.8	4.6%	-1.4%	-0.26	-0.09	Mesic	Temperate Broadleaf and Mixed Forests
Allentown, PA--NJ	3	11.4%	49.4%	37.2	4.6%	-2.3%	-0.34	-0.11	Mesic	Temperate Broadleaf and Mixed Forests
Allentown, PA--NJ	4	4.2%	68.7%	39.4	4.5%	-3.1%	-0.41	-0.14	Mesic	Temperate Broadleaf and Mixed Forests
Allentown, PA--NJ	5	0.7%	87.0%	41.2	2.5%	-2.2%	-0.27	-0.09	Mesic	Temperate Broadleaf and Mixed Forests
Asheville, NC	1	64.6%	10.0%	29.4	4.6%	-0.5%	-0.18	-0.06	Mesic	Temperate Broadleaf and Mixed Forests
Asheville, NC	2	46.6%	27.9%	32.6	4.5%	-1.3%	-0.25	-0.08	Mesic	Temperate Broadleaf and Mixed Forests
Asheville, NC	3	26.5%	47.7%	35.0	4.5%	-2.2%	-0.33	-0.11	Mesic	Temperate Broadleaf and Mixed Forests
Asheville, NC	4	12.7%	67.6%	37.5	4.6%	-3.1%	-0.41	-0.14	Mesic	Temperate Broadleaf and Mixed Forests
Asheville, NC	5	2.8%	87.3%	40.1	4.5%	-4.0%	-0.49	-0.16	Mesic	Temperate Broadleaf and Mixed Forests

Atlanta, GA	1	71.6%	12.8%	33.7	4.4%	-0.6%	-0.18	-0.06	Mesic	Temperate Broadleaf and Mixed Forests
Atlanta, GA	2	57.1%	28.6%	36.5	4.2%	-1.2%	-0.23	-0.08	Mesic	Temperate Broadleaf and Mixed Forests
Atlanta, GA	3	39.4%	47.9%	39.1	3.8%	-1.8%	-0.27	-0.09	Mesic	Temperate Broadleaf and Mixed Forests
Atlanta, GA	4	25.4%	68.3%	40.9	3.1%	-2.1%	-0.28	-0.09	Mesic	Temperate Broadleaf and Mixed Forests
Atlanta, GA	5	16.7%	87.5%	41.8	1.2%	-1.0%	-0.13	-0.04	Mesic	Temperate Broadleaf and Mixed Forests
Augusta, GA	1	63.6%	12.9%	35.5	4.6%	-0.6%	-0.19	-0.06	Mesic	Temperate Broadleaf and Mixed Forests
Augusta, GA	2	44.6%	29.3%	38.8	4.6%	-1.4%	-0.25	-0.09	Mesic	Temperate Broadleaf and Mixed Forests
Augusta, GA	3	26.0%	47.7%	41.7	4.6%	-2.2%	-0.33	-0.11	Mesic	Temperate Broadleaf and Mixed Forests
Augusta, GA	4	12.1%	67.6%	43.8	4.6%	-3.1%	-0.41	-0.14	Mesic	Temperate Broadleaf and Mixed Forests
Augusta, GA	5	10.2%	84.4%	45.7	3.2%	-2.8%	-0.34	-0.12	Mesic	Temperate Broadleaf and Mixed Forests
Austin, TX	1	50.3%	13.5%	41.5	4.6%	-0.6%	-0.19	-0.07	Mesic	Grasslands, Savannas, and Shrublands
Austin, TX	2	42.8%	31.1%	43.5	4.5%	-1.4%	-0.26	-0.09	Mesic	Temperate Grasslands, Savannas, and Shrublands
Austin, TX	3	31.2%	50.0%	45.8	4.2%	-2.1%	-0.31	-0.11	Mesic	Temperate Grasslands, Savannas, and Shrublands
Austin, TX	4	23.1%	68.0%	47.0	3.6%	-2.4%	-0.32	-0.11	Mesic	Temperate Grasslands, Savannas, and Shrublands

Austin, TX	5	15.6%	85.9%	47.7	2.1%	-1.7%	-0.22	-0.08	Mesic	Temperate Grasslands, Savannas, and Shrublands
Baltimore, MD	1	71.3%	12.2%	30.5	4.5%	-0.6%	-0.18	-0.06	Mesic	Temperate Broadleaf and Mixed Forests
Baltimore, MD	2	49.5%	30.0%	34.0	4.5%	-1.4%	-0.25	-0.09	Mesic	Temperate Broadleaf and Mixed Forests
Baltimore, MD	3	27.3%	48.7%	36.9	4.6%	-2.3%	-0.34	-0.11	Mesic	Temperate Broadleaf and Mixed Forests
Baltimore, MD	4	13.1%	68.7%	39.2	4.5%	-3.1%	-0.41	-0.14	Mesic	Temperate Broadleaf and Mixed Forests
Baltimore, MD	5	8.9%	88.9%	41.4	2.5%	-2.1%	-0.26	-0.09	Mesic	Temperate Broadleaf and Mixed Forests
Barnstable Town, MA	1	67.1%	12.4%	28.9	4.5%	-0.6%	-0.18	-0.06	Mesic	Temperate Coniferous Forests
Barnstable Town, MA	2	56.1%	29.6%	30.4	4.1%	-1.2%	-0.23	-0.08	Mesic	Temperate Coniferous Forests
Barnstable Town, MA	3	42.3%	49.1%	32.3	3.4%	-1.6%	-0.25	-0.09	Mesic	Temperate Coniferous Forests
Barnstable Town, MA	4	22.0%	66.8%	35.0	4.0%	-2.7%	-0.36	-0.12	Mesic	Temperate Coniferous Forests
Barnstable Town, MA	5	7.7%	85.9%	39.3	3.7%	-3.2%	-0.39	-0.14	Mesic	Temperate Coniferous Forests
Baton Rouge, LA	1	81.8%	12.5%	34.7	2.9%	-0.4%	-0.12	-0.04	Mesic	Temperate Broadleaf and Mixed Forests
Baton Rouge, LA	2	68.1%	30.4%	37.6	2.0%	-0.6%	-0.11	-0.04	Mesic	Temperate Broadleaf and Mixed Forests
Baton Rouge, LA	3	50.2%	48.9%	40.3	1.9%	-0.9%	-0.14	-0.05	Mesic	Temperate Broadleaf and Mixed Forests
Baton Rouge, LA	4	31.7%	67.0%	42.5	2.2%	-1.5%	-0.20	-0.07	Mesic	Temperate Broadleaf and Mixed Forests

Baton Rouge, LA	5	14.4%	84.0%	43.3	2.1%	-1.8%	-0.22	-0.07	Mesic	Temperate Broadleaf and Mixed Forests
Birmingham, AL	1	77.4%	12.2%	33.6	4.1%	-0.5%	-0.16	-0.05	Mesic	Temperate Broadleaf and Mixed Forests
Birmingham, AL	2	60.5%	29.5%	36.7	3.8%	-1.1%	-0.21	-0.07	Mesic	Temperate Broadleaf and Mixed Forests
Birmingham, AL	3	40.9%	48.4%	39.8	3.6%	-1.7%	-0.26	-0.09	Mesic	Temperate Broadleaf and Mixed Forests
Birmingham, AL	4	25.1%	67.2%	41.8	3.3%	-2.2%	-0.30	-0.10	Mesic	Temperate Broadleaf and Mixed Forests
Birmingham, AL	5	13.5%	89.0%	44.2	1.2%	-1.1%	-0.13	-0.04	Mesic	Temperate Broadleaf and Mixed Forests
Bonita Springs, FL	1	51.2%	13.0%	35.4	4.0%	-0.6%	-0.17	-0.08	Mesic	Flooded Grasslands and Savannas
Bonita Springs, FL	2	27.0%	32.1%	38.9	4.7%	-1.5%	-0.27	-0.12	Mesic	Flooded Grasslands and Savannas
Bonita Springs, FL	3	18.5%	48.8%	40.2	4.6%	-2.2%	-0.34	-0.15	Mesic	Flooded Grasslands and Savannas
Bonita Springs, FL	4	10.6%	67.2%	40.8	4.5%	-3.1%	-0.41	-0.19	Mesic	Flooded Grasslands and Savannas
Bonita Springs, FL	5	4.6%	84.0%	42.0	4.3%	-3.6%	-0.45	-0.21	Mesic	Flooded Grasslands and Savannas
Boston, MA--NH--RI	1	74.5%	12.2%	29.5	4.3%	-0.5%	-0.17	-0.06	Mesic	Temperate Broadleaf and Mixed Forests
Boston, MA--NH--RI	2	60.8%	29.9%	31.8	3.7%	-1.1%	-0.20	-0.07	Mesic	Temperate Broadleaf and Mixed Forests
Boston, MA--NH--RI	3	42.8%	50.5%	34.1	3.2%	-1.6%	-0.24	-0.08	Mesic	Temperate Broadleaf and Mixed Forests
Boston, MA--NH--RI	4	22.3%	71.1%	37.2	3.5%	-2.5%	-0.33	-0.11	Mesic	Temperate Broadleaf and Mixed Forests
Boston, MA--NH--RI	5	7.0%	86.9%	40.2	3.9%	-3.4%	-0.42	-0.14	Mesic	Temperate Broadleaf and Mixed Forests

Bridgeport-- Stamford, CT	1	79.6%	9.9%	28.1	4.0%	-0.4%	-0.16	-0.05	Mesic	Temperate Broadleaf and Mixed Forests
Bridgeport-- Stamford, CT	2	58.3%	29.9%	31.6	4.1%	-1.2%	-0.23	-0.08	Mesic	Temperate Broadleaf and Mixed Forests
Bridgeport-- Stamford, CT	3	38.3%	50.2%	34.5	4.1%	-2.1%	-0.31	-0.10	Mesic	Temperate Broadleaf and Mixed Forests
Bridgeport-- Stamford, CT	4	17.6%	69.9%	37.3	4.4%	-3.1%	-0.41	-0.14	Mesic	Temperate Broadleaf and Mixed Forests
Bridgeport-- Stamford, CT	5	5.0%	85.7%	39.5	4.3%	-3.7%	-0.46	-0.15	Mesic	Temperate Broadleaf and Mixed Forests
Buffalo, NY	1	52.7%	11.5%	28.9	4.6%	-0.5%	-0.18	-0.06	Mesic	Temperate Broadleaf and Mixed Forests
Buffalo, NY	2	27.8%	30.8%	33.1	4.6%	-1.5%	-0.27	-0.09	Mesic	Temperate Broadleaf and Mixed Forests
Buffalo, NY	3	13.5%	49.3%	35.5	4.6%	-2.3%	-0.34	-0.11	Mesic	Temperate Broadleaf and Mixed Forests
Buffalo, NY	4	7.3%	68.6%	36.7	4.4%	-3.1%	-0.41	-0.14	Mesic	Temperate Broadleaf and Mixed Forests
Buffalo, NY	5	2.9%	84.9%	37.6	4.5%	-3.8%	-0.48	-0.16	Mesic	Temperate Broadleaf and Mixed Forests
Cape Coral, FL	1	35.3%	14.7%	36.8	4.6%	-0.7%	-0.20	-0.07	Mesic	Temperate Coniferous Forests
Cape Coral, FL	2	23.2%	30.5%	38.7	4.6%	-1.4%	-0.26	-0.09	Mesic	Temperate Coniferous Forests
Cape Coral, FL	3	15.7%	47.3%	40.5	4.7%	-2.2%	-0.34	-0.12	Mesic	Temperate Coniferous Forests
Cape Coral, FL	4	9.7%	68.0%	41.0	4.5%	-3.0%	-0.40	-0.14	Mesic	Temperate Coniferous Forests
Cape Coral, FL	5	3.9%	84.3%	41.3	4.6%	-3.9%	-0.48	-0.17	Mesic	Temperate Coniferous Forests
Charleston, SC	1	53.6%	13.2%	33.2	4.6%	-0.6%	-0.19	-0.07	Mesic	Temperate Coniferous Forests

Charleston, SC	2	41.5%	29.3%	35.9	4.6%	-1.4%	-0.26	-0.09	Mesic	Temperate Coniferous Forests
Charleston, SC	3	23.2%	48.5%	38.5	4.7%	-2.3%	-0.34	-0.12	Mesic	Temperate Coniferous Forests
Charleston, SC	4	15.6%	67.2%	40.3	4.7%	-3.1%	-0.42	-0.15	Mesic	Temperate Coniferous Forests
Charleston, SC	5	2.9%	85.7%	42.2	4.2%	-3.6%	-0.44	-0.15	Mesic	Temperate Coniferous Forests
Charlotte, NC- -SC	1	67.0%	13.1%	32.8	4.5%	-0.6%	-0.18	-0.06	Mesic	Broadleaf and Mixed Forests
Charlotte, NC- -SC	2	52.5%	28.6%	35.4	4.5%	-1.3%	-0.25	-0.08	Mesic	Temperate Broadleaf and Mixed Forests
Charlotte, NC- -SC	3	30.7%	48.6%	38.4	4.5%	-2.2%	-0.33	-0.11	Mesic	Temperate Broadleaf and Mixed Forests
Charlotte, NC- -SC	4	18.2%	67.9%	40.4	4.3%	-2.9%	-0.39	-0.13	Mesic	Temperate Broadleaf and Mixed Forests
Charlotte, NC- -SC	5	7.3%	86.1%	41.4	3.6%	-3.0%	-0.38	-0.13	Mesic	Temperate Broadleaf and Mixed Forests
Chattanooga, TN--GA	1	72.3%	11.7%	32.7	4.5%	-0.6%	-0.18	-0.06	Mesic	Temperate Broadleaf and Mixed Forests
Chattanooga, TN--GA	2	54.3%	28.2%	36.6	4.4%	-1.3%	-0.24	-0.08	Mesic	Temperate Broadleaf and Mixed Forests
Chattanooga, TN--GA	3	34.9%	48.8%	39.8	4.4%	-2.2%	-0.32	-0.11	Mesic	Temperate Broadleaf and Mixed Forests
Chattanooga, TN--GA	4	19.6%	68.1%	42.3	4.0%	-2.7%	-0.36	-0.12	Mesic	Temperate Broadleaf and Mixed Forests
Chattanooga, TN--GA	5	10.5%	85.4%	44.4	3.2%	-2.7%	-0.33	-0.11	Mesic	Temperate Broadleaf and Mixed Forests
Chicago, IL--IN	1	53.4%	13.7%	30.7	4.6%	-0.6%	-0.19	-0.07	Mesic	Temperate Grasslands, Savannas, and Shrublands

Chicago, IL--IN	2	46.7%	32.7%	33.8	4.4%	-1.4%	-0.26	-0.09	Mesic	Temperate Grasslands, Savannas, and Shrublands
Chicago, IL--IN	3	31.6%	49.6%	36.6	4.5%	-2.3%	-0.33	-0.12	Mesic	Temperate Grasslands, Savannas, and Shrublands
Chicago, IL--IN	4	21.1%	69.2%	38.5	3.9%	-2.7%	-0.35	-0.13	Mesic	Temperate Grasslands, Savannas, and Shrublands
Chicago, IL--IN	5	13.3%	87.4%	38.1	1.6%	-1.4%	-0.17	-0.06	Mesic	Temperate Grasslands, Savannas, and Shrublands
Cincinnati, OH--KY--IN	1	62.9%	13.0%	30.8	4.6%	-0.6%	-0.19	-0.06	Mesic	Broadleaf and Mixed Forests
Cincinnati, OH--KY--IN	2	45.6%	29.3%	33.7	4.6%	-1.4%	-0.25	-0.09	Mesic	Broadleaf and Mixed Forests
Cincinnati, OH--KY--IN	3	31.7%	48.5%	36.1	4.5%	-2.2%	-0.33	-0.11	Mesic	Broadleaf and Mixed Forests
Cincinnati, OH--KY--IN	4	19.4%	68.2%	38.6	4.2%	-2.9%	-0.38	-0.13	Mesic	Broadleaf and Mixed Forests
Cincinnati, OH--KY--IN	5	13.6%	85.2%	40.7	2.5%	-2.1%	-0.26	-0.09	Mesic	Broadleaf and Mixed Forests
Cleveland, OH	1	44.5%	14.0%	29.9	4.6%	-0.7%	-0.19	-0.06	Mesic	Broadleaf and Mixed Forests
Cleveland, OH	2	30.4%	30.4%	32.9	4.5%	-1.4%	-0.26	-0.09	Mesic	Broadleaf and Mixed Forests
Cleveland, OH	3	14.9%	49.7%	36.2	4.5%	-2.3%	-0.34	-0.11	Mesic	Broadleaf and Mixed Forests
Cleveland, OH	4	8.4%	66.2%	38.0	4.5%	-3.0%	-0.40	-0.13	Mesic	Broadleaf and Mixed Forests
Cleveland, OH	5	1.3%	87.9%	40.2	4.0%	-3.6%	-0.44	-0.15	Mesic	Broadleaf and Mixed Forests

Columbia, SC	1	58.4%	13.1%	34.3	4.6%	-0.6%	-0.19	-0.06	Mesic	Temperate Broadleaf and Mixed Forests
Columbia, SC	2	44.7%	29.7%	36.9	4.5%	-1.4%	-0.25	-0.09	Mesic	Temperate Broadleaf and Mixed Forests
Columbia, SC	3	27.7%	48.2%	39.7	4.6%	-2.2%	-0.33	-0.11	Mesic	Temperate Broadleaf and Mixed Forests
Columbia, SC	4	17.8%	67.8%	41.7	4.5%	-3.0%	-0.40	-0.14	Mesic	Temperate Broadleaf and Mixed Forests
Columbia, SC	5	8.7%	87.6%	43.9	3.0%	-2.6%	-0.32	-0.11	Mesic	Temperate Broadleaf and Mixed Forests
Columbus, OH	1	31.9%	13.9%	31.7	4.6%	-0.7%	-0.19	-0.06	Mesic	Temperate Broadleaf and Mixed Forests
Columbus, OH	2	22.2%	32.2%	34.4	4.6%	-1.5%	-0.27	-0.09	Mesic	Temperate Broadleaf and Mixed Forests
Columbus, OH	3	12.6%	48.6%	36.7	4.6%	-2.2%	-0.33	-0.11	Mesic	Temperate Broadleaf and Mixed Forests
Columbus, OH	4	5.3%	68.4%	39.3	4.5%	-3.1%	-0.41	-0.14	Mesic	Temperate Broadleaf and Mixed Forests
Columbus, OH	5	1.8%	87.2%	40.9	3.2%	-2.8%	-0.35	-0.12	Mesic	Temperate Broadleaf and Mixed Forests
Concord, CA	1	35.3%	12.6%	38.8	4.6%	-0.6%	-0.38	-0.10	Arid	Mediterranean Forests, Woodlands, and Scrub
Concord, CA	2	24.6%	30.7%	40.9	4.6%	-1.4%	-0.41	-0.10	Arid	Mediterranean Forests, Woodlands, and Scrub
Concord, CA	3	12.9%	50.2%	42.8	4.6%	-2.3%	-0.43	-0.11	Arid	Mediterranean Forests, Woodlands, and Scrub
Concord, CA	4	5.9%	68.7%	43.2	4.6%	-3.1%	-0.45	-0.11	Arid	Mediterranean Forests, Woodlands, and Scrub
Concord, CA	5	2.3%	84.6%	43.1	3.8%	-3.2%	-0.40	-0.10	Arid	Mediterranean Forests,

Dallas--Fort Worth, TX	1	44.8%	13.7%	38.9	4.6%	-0.6%	-0.19	-0.07	Mesic	Woodlands, and Scrub Temperate Grasslands, Savannas, and Shrublands
Dallas--Fort Worth, TX	2	40.4%	31.2%	40.7	4.6%	-1.5%	-0.26	-0.09	Mesic	Temperate Grasslands, Savannas, and Shrublands
Dallas--Fort Worth, TX	3	25.4%	50.2%	43.0	4.6%	-2.3%	-0.34	-0.12	Mesic	Temperate Grasslands, Savannas, and Shrublands
Dallas--Fort Worth, TX	4	15.5%	68.5%	44.3	4.4%	-3.0%	-0.40	-0.14	Mesic	Temperate Grasslands, Savannas, and Shrublands
Dallas--Fort Worth, TX	5	10.7%	86.0%	44.9	2.9%	-2.5%	-0.31	-0.11	Mesic	Temperate Grasslands, Savannas, and Shrublands
Dayton, OH	1	43.1%	13.5%	30.8	4.7%	-0.6%	-0.19	-0.06	Mesic	Broadleaf and Mixed Forests
Dayton, OH	2	32.5%	31.4%	33.7	4.7%	-1.5%	-0.27	-0.09	Mesic	Temperate Broadleaf and Mixed Forests
Dayton, OH	3	20.0%	47.6%	36.0	4.7%	-2.2%	-0.34	-0.11	Mesic	Temperate Broadleaf and Mixed Forests
Dayton, OH	4	7.8%	66.0%	38.1	4.4%	-3.0%	-0.40	-0.13	Mesic	Temperate Broadleaf and Mixed Forests
Dayton, OH	5	1.1%	86.8%	40.4	2.8%	-2.5%	-0.30	-0.10	Mesic	Temperate Broadleaf and Mixed Forests
Denver--Aurora, CO	1	22.8%	14.0%	39.3	4.6%	-0.6%	-0.19	-0.07	Mesic	Grasslands, Savannas, and Shrublands
Denver--Aurora, CO	2	30.5%	32.7%	39.7	4.6%	-1.5%	-0.27	-0.10	Mesic	Temperate Grasslands, Savannas, and Shrublands

Denver-- Aurora, CO	3	22.3%	49.2%	41.7	4.6%	-2.3%	-0.34	-0.12	Mesic	Temperate Grasslands, Savannas, and Shrublands
Denver-- Aurora, CO	4	14.4%	67.6%	43.0	4.5%	-3.1%	-0.41	-0.15	Mesic	Temperate Grasslands, Savannas, and Shrublands
Denver-- Aurora, CO	5	9.9%	85.5%	44.1	3.3%	-2.7%	-0.34	-0.12	Mesic	Temperate Grasslands, Savannas, and Shrublands
Des Moines, IA	1	38.1%	14.8%	32.0	4.7%	-0.7%	-0.20	-0.07	Mesic	Temperate Grasslands, Savannas, and Shrublands
Des Moines, IA	2	32.3%	32.3%	34.6	4.7%	-1.5%	-0.27	-0.10	Mesic	Temperate Grasslands, Savannas, and Shrublands
Des Moines, IA	3	27.7%	47.7%	36.8	4.4%	-2.1%	-0.32	-0.11	Mesic	Temperate Grasslands, Savannas, and Shrublands
Des Moines, IA	4	22.7%	66.8%	38.9	3.6%	-2.4%	-0.32	-0.11	Mesic	Temperate Grasslands, Savannas, and Shrublands
Des Moines, IA	5	5.2%	90.3%	41.4	3.9%	-3.5%	-0.43	-0.15	Mesic	Temperate Grasslands, Savannas, and Shrublands
Detroit, MI	1	64.4%	13.6%	28.9	4.6%	-0.6%	-0.19	-0.06	Mesic	Broadleaf and Mixed Forests
Detroit, MI	2	49.3%	31.2%	32.0	4.5%	-1.4%	-0.26	-0.09	Mesic	Temperate Broadleaf and Mixed Forests
Detroit, MI	3	30.6%	51.6%	35.3	4.5%	-2.3%	-0.34	-0.11	Mesic	Temperate Broadleaf and Mixed Forests
Detroit, MI	4	17.5%	67.0%	37.3	4.5%	-3.0%	-0.40	-0.13	Mesic	Temperate Broadleaf and Mixed Forests
Detroit, MI	5	5.4%	86.0%	39.7	4.3%	-3.7%	-0.45	-0.15	Mesic	Temperate Broadleaf and Mixed Forests

El Paso, TX-- NM	1	5.7%	10.9%	49.6	4.6%	-0.5%	-0.39	-0.14	Arid	Deserts and Xeric Shrublands
El Paso, TX-- NM	2	7.1%	31.4%	50.1	4.7%	-1.5%	-0.42	-0.15	Arid	Deserts and Xeric Shrublands
El Paso, TX-- NM	3	6.7%	52.6%	51.0	4.4%	-2.3%	-0.42	-0.15	Arid	Deserts and Xeric Shrublands
El Paso, TX-- NM	4	4.9%	66.2%	51.2	4.2%	-2.8%	-0.42	-0.15	Arid	Deserts and Xeric Shrublands
El Paso, TX-- NM	5	2.3%	84.9%	51.2	3.3%	-2.9%	-0.35	-0.12	Arid	Deserts and Xeric Shrublands
Fayetteville, NC	1	63.9%	12.9%	34.0	4.6%	-0.6%	-0.19	-0.06	Mesic	Temperate Coniferous Forests
Fayetteville, NC	2	44.6%	29.6%	36.6	4.6%	-1.4%	-0.26	-0.09	Mesic	Temperate Coniferous Forests
Fayetteville, NC	3	23.4%	47.6%	39.2	4.6%	-2.2%	-0.33	-0.12	Mesic	Temperate Coniferous Forests
Fayetteville, NC	4	10.5%	68.5%	40.5	4.6%	-3.2%	-0.42	-0.15	Mesic	Temperate Coniferous Forests
Fayetteville, NC	5	3.3%	83.6%	41.1	4.1%	-3.5%	-0.43	-0.15	Mesic	Temperate Coniferous Forests
Flint, MI	1	68.7%	12.6%	28.6	4.4%	-0.6%	-0.18	-0.06	Mesic	Broadleaf and Mixed Forests
Flint, MI	2	55.0%	30.0%	31.3	4.2%	-1.3%	-0.24	-0.08	Mesic	Temperate Broadleaf and Mixed Forests
Flint, MI	3	41.5%	49.5%	33.3	3.3%	-1.6%	-0.24	-0.08	Mesic	Temperate Broadleaf and Mixed Forests
Flint, MI	4	23.9%	67.3%	35.1	3.6%	-2.4%	-0.32	-0.11	Mesic	Temperate Broadleaf and Mixed Forests
Flint, MI	5	12.3%	86.2%	37.3	2.0%	-1.7%	-0.21	-0.07	Mesic	Temperate Broadleaf and Mixed Forests
Grand Rapids, MI	1	67.0%	13.8%	28.8	4.3%	-0.6%	-0.18	-0.06	Mesic	Broadleaf and Mixed Forests
Grand Rapids, MI	2	61.5%	31.2%	31.1	2.9%	-0.9%	-0.16	-0.06	Mesic	Temperate Broadleaf and Mixed Forests

Grand Rapids, MI	3	46.6%	49.6%	34.0	2.6%	-1.3%	-0.19	-0.07	Mesic	Temperate Broadleaf and Mixed Forests
Grand Rapids, MI	4	28.8%	67.0%	36.2	2.8%	-1.9%	-0.25	-0.09	Mesic	Temperate Broadleaf and Mixed Forests
Grand Rapids, MI	5	8.4%	88.8%	38.8	2.7%	-2.4%	-0.30	-0.10	Mesic	Temperate Broadleaf and Mixed Forests
Greenville, SC	1	44.2%	11.6%	33.9	4.5%	-0.5%	-0.18	-0.06	Mesic	Temperate Broadleaf and Mixed Forests
Greenville, SC	2	33.6%	28.4%	36.8	4.6%	-1.3%	-0.25	-0.09	Mesic	Temperate Broadleaf and Mixed Forests
Greenville, SC	3	22.7%	48.4%	39.4	4.6%	-2.2%	-0.34	-0.11	Mesic	Temperate Broadleaf and Mixed Forests
Greenville, SC	4	13.6%	68.2%	41.5	4.7%	-3.2%	-0.42	-0.14	Mesic	Temperate Broadleaf and Mixed Forests
Greenville, SC	5	6.2%	85.9%	43.0	3.6%	-3.1%	-0.38	-0.13	Mesic	Temperate Broadleaf and Mixed Forests
Harrisburg, PA	1	54.5%	12.0%	31.3	4.6%	-0.6%	-0.19	-0.06	Mesic	Temperate Broadleaf and Mixed Forests
Harrisburg, PA	2	41.6%	31.3%	34.5	4.6%	-1.5%	-0.26	-0.09	Mesic	Temperate Broadleaf and Mixed Forests
Harrisburg, PA	3	28.5%	48.5%	36.8	4.5%	-2.2%	-0.33	-0.11	Mesic	Temperate Broadleaf and Mixed Forests
Harrisburg, PA	4	23.1%	68.7%	38.9	3.4%	-2.3%	-0.31	-0.10	Mesic	Temperate Broadleaf and Mixed Forests
Harrisburg, PA	5	20.9%	85.6%	40.5	1.1%	-0.9%	-0.11	-0.04	Mesic	Temperate Broadleaf and Mixed Forests
Hartford, CT	1	68.6%	11.2%	29.6	4.6%	-0.5%	-0.18	-0.06	Mesic	Temperate Broadleaf and Mixed Forests
Hartford, CT	2	48.3%	29.9%	33.5	4.6%	-1.4%	-0.26	-0.09	Mesic	Temperate Broadleaf and Mixed Forests
Hartford, CT	3	28.6%	49.6%	36.6	4.6%	-2.3%	-0.34	-0.11	Mesic	Temperate Broadleaf and Mixed Forests

Hartford, CT	4	13.3%	68.7%	39.2	4.5%	-3.1%	-0.41	-0.14	Mesic	Temperate Broadleaf and Mixed Forests
Hartford, CT	5	4.1%	84.3%	41.1	4.3%	-3.7%	-0.46	-0.15	Mesic	Temperate Broadleaf and Mixed Forests
Hickory, NC	1	57.9%	10.6%	32.3	4.6%	-0.5%	-0.18	-0.06	Mesic	Temperate Broadleaf and Mixed Forests
Hickory, NC	2	46.5%	27.7%	35.1	4.6%	-1.3%	-0.25	-0.08	Mesic	Temperate Broadleaf and Mixed Forests
Hickory, NC	3	28.0%	47.4%	38.0	4.6%	-2.2%	-0.33	-0.11	Mesic	Temperate Broadleaf and Mixed Forests
Hickory, NC	4	13.6%	67.2%	40.4	4.4%	-3.0%	-0.40	-0.13	Mesic	Temperate Broadleaf and Mixed Forests
Hickory, NC	5	2.7%	84.3%	43.2	3.6%	-3.1%	-0.38	-0.13	Mesic	Temperate Broadleaf and Mixed Forests
Houston, TX	1	47.5%	14.3%	37.3	4.6%	-0.7%	-0.19	-0.08	Mesic	Tropical and subtropical grasslands, savannas, and shrublands
Houston, TX	2	37.3%	31.5%	39.6	4.5%	-1.4%	-0.26	-0.10	Mesic	Tropical and subtropical grasslands, savannas, and shrublands
Houston, TX	3	31.6%	51.9%	42.3	3.9%	-2.0%	-0.29	-0.12	Mesic	Tropical and subtropical grasslands, savannas, and shrublands
Houston, TX	4	25.0%	68.2%	44.2	3.2%	-2.1%	-0.28	-0.11	Mesic	Tropical and subtropical grasslands, savannas, and shrublands
Houston, TX	5	12.5%	86.2%	46.3	2.3%	-2.0%	-0.25	-0.10	Mesic	Tropical and subtropical grasslands, savannas, and shrublands

Huntsville, AL	1	65.7%	11.9%	35.1	4.5%	-0.5%	-0.18	-0.06	Mesic	Temperate Broadleaf and Mixed Forests
Huntsville, AL	2	50.4%	30.6%	38.4	4.5%	-1.4%	-0.25	-0.08	Mesic	Temperate Broadleaf and Mixed Forests
Huntsville, AL	3	31.5%	48.2%	41.2	4.5%	-2.2%	-0.33	-0.11	Mesic	Temperate Broadleaf and Mixed Forests
Huntsville, AL	4	19.3%	67.2%	43.2	4.3%	-2.9%	-0.38	-0.13	Mesic	Temperate Broadleaf and Mixed Forests
Huntsville, AL	5	10.3%	84.7%	45.0	3.2%	-2.7%	-0.33	-0.11	Mesic	Temperate Broadleaf and Mixed Forests
Indianapolis, IN	1	43.3%	13.2%	32.6	4.7%	-0.6%	-0.19	-0.06	Mesic	Temperate Broadleaf and Mixed Forests
Indianapolis, IN	2	33.1%	31.5%	35.2	4.6%	-1.5%	-0.27	-0.09	Mesic	Temperate Broadleaf and Mixed Forests
Indianapolis, IN	3	18.1%	48.8%	37.8	4.6%	-2.3%	-0.34	-0.11	Mesic	Temperate Broadleaf and Mixed Forests
Indianapolis, IN	4	7.3%	66.7%	40.0	4.5%	-3.0%	-0.40	-0.13	Mesic	Temperate Broadleaf and Mixed Forests
Indianapolis, IN	5	1.5%	87.9%	41.8	4.0%	-3.6%	-0.44	-0.15	Mesic	Temperate Broadleaf and Mixed Forests
Jackson, MS	1	73.0%	13.2%	33.4	4.2%	-0.6%	-0.17	-0.06	Mesic	Temperate Broadleaf and Mixed Forests
Jackson, MS	2	57.3%	29.9%	35.8	4.2%	-1.3%	-0.24	-0.08	Mesic	Temperate Broadleaf and Mixed Forests
Jackson, MS	3	34.1%	48.5%	38.7	4.4%	-2.2%	-0.32	-0.11	Mesic	Temperate Broadleaf and Mixed Forests
Jackson, MS	4	19.3%	67.8%	41.0	4.0%	-2.8%	-0.37	-0.12	Mesic	Temperate Broadleaf and Mixed Forests
Jackson, MS	5	10.6%	86.0%	42.6	2.9%	-2.5%	-0.31	-0.10	Mesic	Temperate Broadleaf and Mixed Forests
Jacksonville, FL	1	60.5%	13.6%	34.6	4.6%	-0.6%	-0.19	-0.07	Mesic	Temperate Coniferous Forests

Jacksonville, FL	2	43.3%	29.4%	37.7	4.6%	-1.4%	-0.25	-0.09	Mesic	Temperate Coniferous Forests
Jacksonville, FL	3	26.9%	48.4%	40.0	4.6%	-2.2%	-0.34	-0.12	Mesic	Temperate Coniferous Forests
Jacksonville, FL	4	13.6%	67.6%	41.6	4.4%	-3.0%	-0.40	-0.14	Mesic	Temperate Coniferous Forests
Jacksonville, FL	5	7.0%	86.7%	43.5	3.7%	-3.2%	-0.39	-0.14	Mesic	Temperate Coniferous Forests
Kansas City, MO--KS	1	52.7%	14.9%	33.5	4.5%	-0.7%	-0.19	-0.07	Mesic	Temperate Grasslands, Savannas, and Shrublands
Kansas City, MO--KS	2	43.9%	31.1%	35.9	4.5%	-1.4%	-0.26	-0.09	Mesic	Temperate Grasslands, Savannas, and Shrublands
Kansas City, MO--KS	3	26.2%	47.9%	38.6	4.6%	-2.2%	-0.33	-0.12	Mesic	Temperate Grasslands, Savannas, and Shrublands
Kansas City, MO--KS	4	14.3%	67.6%	41.2	4.5%	-3.1%	-0.41	-0.15	Mesic	Temperate Grasslands, Savannas, and Shrublands
Kansas City, MO--KS	5	9.2%	87.7%	44.0	2.8%	-2.4%	-0.29	-0.11	Mesic	Temperate Grasslands, Savannas, and Shrublands
Knoxville, TN	1	72.5%	12.5%	31.5	4.0%	-0.5%	-0.16	-0.05	Mesic	Broadleaf and Mixed Forests
Knoxville, TN	2	62.3%	28.9%	33.7	3.6%	-1.0%	-0.20	-0.07	Mesic	Temperate Broadleaf and Mixed Forests
Knoxville, TN	3	46.3%	47.7%	36.2	3.0%	-1.4%	-0.22	-0.07	Mesic	Temperate Broadleaf and Mixed Forests
Knoxville, TN	4	26.4%	68.0%	38.8	3.0%	-2.0%	-0.27	-0.09	Mesic	Temperate Broadleaf and Mixed Forests
Knoxville, TN	5	11.9%	84.2%	41.8	3.4%	-2.8%	-0.36	-0.12	Mesic	Temperate Broadleaf and Mixed Forests

Lancaster, PA	1	49.5%	11.6%	30.5	4.6%	-0.5%	-0.18	-0.06	Mesic	Temperate Broadleaf and Mixed Forests
Lancaster, PA	2	42.8%	29.3%	33.6	4.6%	-1.4%	-0.26	-0.09	Mesic	Temperate Broadleaf and Mixed Forests
Lancaster, PA	3	25.6%	49.1%	36.1	4.6%	-2.3%	-0.34	-0.11	Mesic	Temperate Broadleaf and Mixed Forests
Lancaster, PA	4	13.0%	69.2%	38.8	4.5%	-3.1%	-0.41	-0.14	Mesic	Temperate Broadleaf and Mixed Forests
Lancaster, PA	5	4.6%	85.6%	40.9	4.2%	-3.6%	-0.45	-0.15	Mesic	Temperate Broadleaf and Mixed Forests
Las Vegas--Henderson, NV	1	1.2%	12.7%	52.0	3.9%	-0.5%	-0.32	-0.12	Arid	Deserts and Xeric Shrublands
Las Vegas--Henderson, NV	2	5.2%	32.1%	51.2	4.7%	-1.5%	-0.42	-0.15	Arid	Deserts and Xeric Shrublands
Las Vegas--Henderson, NV	3	6.0%	52.6%	51.3	4.6%	-2.4%	-0.44	-0.16	Arid	Deserts and Xeric Shrublands
Las Vegas--Henderson, NV	4	7.5%	68.6%	51.9	4.6%	-3.1%	-0.45	-0.16	Arid	Deserts and Xeric Shrublands
Las Vegas--Henderson, NV	5	6.3%	83.9%	52.6	4.5%	-3.7%	-0.46	-0.16	Arid	Deserts and Xeric Shrublands
Little Rock, AR	1	83.1%	12.5%	33.3	2.5%	-0.3%	-0.10	-0.03	Mesic	Temperate Broadleaf and Mixed Forests
Little Rock, AR	2	70.6%	31.3%	36.2	1.2%	-0.4%	-0.07	-0.02	Mesic	Temperate Broadleaf and Mixed Forests
Little Rock, AR	3	54.9%	47.5%	38.5	1.3%	-0.6%	-0.09	-0.03	Mesic	Temperate Broadleaf and Mixed Forests
Little Rock, AR	4	31.2%	67.2%	41.1	2.1%	-1.4%	-0.19	-0.06	Mesic	Temperate Broadleaf and Mixed Forests
Little Rock, AR	5	12.5%	86.7%	43.0	2.3%	-2.0%	-0.25	-0.08	Mesic	Temperate Broadleaf and Mixed Forests
Los Angeles--Long Beach, CA	1	46.1%	13.3%	40.3	4.6%	-0.6%	-0.38	-0.10	Arid	Mediterranean Forests,

Los Angeles-- Long Beach, CA	2	36.0%	31.9%	42.1	4.6%	-1.5%	-0.41	-0.10	Arid	Woodlands, and Scrub Mediterranean Forests, Woodlands, and Scrub Mediterranean Forests, Woodlands, and Scrub
Los Angeles-- Long Beach, CA	3	20.8%	52.9%	45.1	4.7%	-2.5%	-0.44	-0.11	Arid	Mediterranean Forests, Woodlands, and Scrub Mediterranean Forests, Woodlands, and Scrub
Los Angeles-- Long Beach, CA	4	16.9%	69.3%	45.9	4.1%	-2.8%	-0.41	-0.10	Arid	Mediterranean Forests, Woodlands, and Scrub Mediterranean Forests, Woodlands, and Scrub
Los Angeles-- Long Beach, CA	5	14.7%	85.6%	46.2	2.1%	-1.7%	-0.22	-0.05	Arid	Temperate Broadleaf and Mixed Forests
Los Angeles-- Long Beach, CA	1	52.2%	12.0%	31.9	4.6%	-0.6%	-0.18	-0.06	Mesic	Temperate Broadleaf and Mixed Forests
Los Angeles-- Long Beach, CA	2	37.2%	30.4%	35.0	4.6%	-1.4%	-0.26	-0.09	Mesic	Temperate Broadleaf and Mixed Forests
Los Angeles-- Long Beach, CA	3	28.4%	48.3%	37.2	4.5%	-2.1%	-0.32	-0.11	Mesic	Temperate Broadleaf and Mixed Forests
Los Angeles-- Long Beach, CA	4	20.5%	67.4%	39.3	4.0%	-2.7%	-0.35	-0.12	Mesic	Temperate Broadleaf and Mixed Forests
Los Angeles-- Long Beach, CA	5	14.4%	87.8%	41.4	1.6%	-1.3%	-0.16	-0.05	Mesic	Deserts and Xeric Shrublands
McAllen, TX	1	6.6%	11.1%	43.2	4.5%	-0.5%	-0.38	-0.13	Arid	Deserts and Xeric Shrublands
McAllen, TX	2	7.7%	31.0%	44.3	4.6%	-1.4%	-0.41	-0.15	Arid	Deserts and Xeric Shrublands
McAllen, TX	3	8.6%	50.1%	45.7	4.6%	-2.3%	-0.43	-0.15	Arid	Deserts and Xeric Shrublands
McAllen, TX	4	6.5%	67.7%	46.8	4.5%	-3.0%	-0.44	-0.16	Arid	Deserts and Xeric Shrublands
McAllen, TX	5	3.7%	84.1%	48.0	4.3%	-3.6%	-0.45	-0.16	Arid	Deserts and Xeric Shrublands
Memphis, TN-- MS--AR	1	72.6%	13.0%	32.4	4.2%	-0.6%	-0.17	-0.06	Mesic	Temperate Broadleaf and Mixed Forests

Memphis, TN--MS--AR	2	59.1%	31.4%	35.1	3.6%	-1.1%	-0.20	-0.07	Mesic	Temperate Broadleaf and Mixed Forests
Memphis, TN--MS--AR	3	43.9%	48.3%	37.5	3.2%	-1.5%	-0.23	-0.08	Mesic	Temperate Broadleaf and Mixed Forests
Memphis, TN--MS--AR	4	30.0%	67.9%	40.0	2.5%	-1.7%	-0.23	-0.08	Mesic	Temperate Broadleaf and Mixed Forests
Memphis, TN--MS--AR	5	13.2%	86.1%	42.8	2.7%	-2.3%	-0.29	-0.10	Mesic	Temperate Broadleaf and Mixed Forests
Miami, FL	1	51.5%	15.7%	32.1	4.6%	-0.7%	-0.20	-0.09	Mesic	Flooded Grasslands and Savannas
Miami, FL	2	40.3%	32.1%	34.1	4.6%	-1.5%	-0.27	-0.12	Mesic	Flooded Grasslands and Savannas
Miami, FL	3	29.3%	49.4%	35.4	4.5%	-2.2%	-0.33	-0.15	Mesic	Flooded Grasslands and Savannas
Miami, FL	4	18.5%	68.5%	34.9	4.2%	-2.9%	-0.38	-0.17	Mesic	Flooded Grasslands and Savannas
Miami, FL	5	10.0%	85.2%	33.6	3.3%	-2.8%	-0.35	-0.16	Mesic	Flooded Grasslands and Savannas
Milwaukee, WI	1	60.1%	12.9%	28.3	4.6%	-0.6%	-0.19	-0.06	Mesic	Temperate Broadleaf and Mixed Forests
Milwaukee, WI	2	51.0%	30.8%	30.6	4.5%	-1.4%	-0.26	-0.09	Mesic	Temperate Broadleaf and Mixed Forests
Milwaukee, WI	3	29.8%	50.4%	33.1	4.5%	-2.3%	-0.34	-0.11	Mesic	Temperate Broadleaf and Mixed Forests
Milwaukee, WI	4	13.9%	67.4%	35.3	4.5%	-3.0%	-0.40	-0.14	Mesic	Temperate Broadleaf and Mixed Forests
Milwaukee, WI	5	3.0%	86.3%	36.8	4.2%	-3.7%	-0.45	-0.15	Mesic	Temperate Broadleaf and Mixed Forests
Minneapolis--St. Paul, MN	1	62.6%	13.5%	27.9	4.5%	-0.6%	-0.18	-0.06	Mesic	Temperate Broadleaf and Mixed Forests
Minneapolis--St. Paul, MN	2	56.7%	31.7%	30.4	4.0%	-1.3%	-0.23	-0.08	Mesic	Temperate Broadleaf and Mixed Forests

Minneapolis-- St. Paul, MN	3	44.2%	49.1%	32.7	3.5%	-1.7%	-0.26	-0.09	Mesic	Temperate Broadleaf and Mixed Forests
Minneapolis-- St. Paul, MN	4	25.2%	68.0%	35.0	3.6%	-2.5%	-0.33	-0.11	Mesic	Temperate Broadleaf and Mixed Forests
Minneapolis-- St. Paul, MN	5	6.2%	88.2%	37.5	3.8%	-3.3%	-0.41	-0.14	Mesic	Temperate Broadleaf and Mixed Forests
Mobile, AL	1	67.4%	11.1%	33.2	4.5%	-0.5%	-0.18	-0.06	Mesic	Temperate Coniferous Forests
Mobile, AL	2	50.3%	27.8%	36.6	4.4%	-1.3%	-0.24	-0.08	Mesic	Temperate Coniferous Forests
Mobile, AL	3	29.5%	48.4%	39.6	4.6%	-2.2%	-0.33	-0.12	Mesic	Temperate Coniferous Forests
Mobile, AL	4	13.9%	67.0%	42.1	4.4%	-3.0%	-0.40	-0.14	Mesic	Temperate Coniferous Forests
Mobile, AL	5	16.1%	85.2%	45.3	2.2%	-1.9%	-0.23	-0.08	Mesic	Temperate Coniferous Forests
Myrtle Beach, SC	1	57.9%	13.6%	34.9	4.6%	-0.6%	-0.19	-0.07	Mesic	Temperate Coniferous Forests
Myrtle Beach, SC	2	39.6%	29.3%	37.7	4.6%	-1.4%	-0.26	-0.09	Mesic	Temperate Coniferous Forests
Myrtle Beach, SC	3	20.4%	48.4%	40.3	4.6%	-2.2%	-0.33	-0.12	Mesic	Temperate Coniferous Forests
Myrtle Beach, SC	4	11.8%	66.5%	42.2	4.6%	-3.0%	-0.41	-0.14	Mesic	Temperate Coniferous Forests
Myrtle Beach, SC	5	8.1%	85.1%	43.7	4.6%	-3.9%	-0.49	-0.17	Mesic	Temperate Coniferous Forests
Nashville- Davidson, TN	1	72.4%	12.7%	33.6	4.3%	-0.6%	-0.17	-0.06	Mesic	Temperate Broadleaf and Mixed Forests
Nashville- Davidson, TN	2	60.6%	29.8%	36.5	3.7%	-1.1%	-0.21	-0.07	Mesic	Temperate Broadleaf and Mixed Forests
Nashville- Davidson, TN	3	43.1%	48.5%	39.0	3.4%	-1.6%	-0.25	-0.08	Mesic	Temperate Broadleaf and Mixed Forests

Nashville- Davidson, TN	4	24.0%	67.4%	41.3	3.9%	-2.6%	-0.35	-0.12	Mesic	Temperate Broadleaf and Mixed Forests
Nashville- Davidson, TN	5	11.7%	87.8%	43.2	2.4%	-2.1%	-0.26	-0.09	Mesic	Temperate Broadleaf and Mixed Forests
New Haven, CT	1	69.9%	11.3%	29.5	4.6%	-0.5%	-0.18	-0.06	Mesic	Temperate Broadleaf and Mixed Forests
New Haven, CT	2	50.9%	30.2%	32.4	4.4%	-1.4%	-0.25	-0.08	Mesic	Temperate Broadleaf and Mixed Forests
New Haven, CT	3	31.8%	50.1%	35.2	4.5%	-2.3%	-0.34	-0.11	Mesic	Temperate Broadleaf and Mixed Forests
New Haven, CT	4	16.7%	68.7%	37.6	4.6%	-3.2%	-0.42	-0.14	Mesic	Temperate Broadleaf and Mixed Forests
New Haven, CT	5	5.6%	84.9%	39.2	4.4%	-3.8%	-0.47	-0.16	Mesic	Temperate Broadleaf and Mixed Forests
New Orleans, LA	1	75.5%	13.9%	33.8	3.4%	-0.5%	-0.14	-0.05	Mesic	Temperate Broadleaf and Mixed Forests
New Orleans, LA	2	58.7%	34.0%	38.6	3.1%	-1.0%	-0.18	-0.06	Mesic	Temperate Broadleaf and Mixed Forests
New Orleans, LA	3	41.9%	50.6%	41.4	3.3%	-1.7%	-0.25	-0.08	Mesic	Temperate Broadleaf and Mixed Forests
New Orleans, LA	4	30.8%	67.3%	42.8	2.4%	-1.6%	-0.21	-0.07	Mesic	Temperate Broadleaf and Mixed Forests
New Orleans, LA	5	19.0%	86.6%	44.1	0.9%	-0.7%	-0.09	-0.03	Mesic	Temperate Broadleaf and Mixed Forests
New York-- Newark, NY-- NJ--CT--PA	1	61.0%	12.2%	31.0	4.6%	-0.6%	-0.19	-0.06	Mesic	Temperate Broadleaf and Mixed Forests
New York-- Newark, NY-- NJ--CT--PA	2	42.1%	30.2%	34.1	4.6%	-1.4%	-0.26	-0.09	Mesic	Temperate Broadleaf and Mixed Forests
New York-- Newark, NY-- NJ--CT--PA	3	27.2%	50.6%	36.8	4.6%	-2.3%	-0.34	-0.11	Mesic	Temperate Broadleaf and Mixed Forests
New York-- Newark, NY-- NJ--CT--PA	4	16.3%	70.6%	38.6	4.3%	-3.0%	-0.40	-0.13	Mesic	Temperate Broadleaf and Mixed Forests

New York-- Newark, NY-- NJ--CT--PA	5	6.8%	89.4%	38.4	3.0%	-2.7%	-0.33	-0.11	Mesic	Temperate Broadleaf and Mixed Forests
Ogden-- Layton, UT	1	14.9%	14.0%	39.5	4.7%	-0.7%	-0.40	-0.14	Arid	Deserts and Xeric Shrublands
Ogden-- Layton, UT	2	19.3%	32.3%	40.7	4.5%	-1.5%	-0.41	-0.14	Arid	Deserts and Xeric Shrublands
Ogden-- Layton, UT	3	18.4%	49.1%	42.4	4.5%	-2.2%	-0.43	-0.15	Arid	Deserts and Xeric Shrublands
Ogden-- Layton, UT	4	12.2%	67.5%	44.6	4.5%	-3.0%	-0.45	-0.16	Arid	Deserts and Xeric Shrublands
Ogden-- Layton, UT	5	8.3%	84.8%	45.6	4.0%	-3.3%	-0.41	-0.15	Arid	Deserts and Xeric Shrublands
Oklahoma City, OK	1	33.7%	12.5%	36.7	4.7%	-0.6%	-0.19	-0.07	Mesic	Temperate Grasslands, Savannas, and Shrublands
Oklahoma City, OK	2	29.2%	30.8%	38.3	4.6%	-1.4%	-0.26	-0.09	Mesic	Temperate Grasslands, Savannas, and Shrublands
Oklahoma City, OK	3	24.3%	52.3%	40.2	4.6%	-2.4%	-0.35	-0.13	Mesic	Temperate Grasslands, Savannas, and Shrublands
Oklahoma City, OK	4	17.0%	66.3%	41.6	4.4%	-2.9%	-0.39	-0.14	Mesic	Temperate Grasslands, Savannas, and Shrublands
Oklahoma City, OK	5	9.3%	86.6%	43.1	3.4%	-2.9%	-0.36	-0.13	Mesic	Temperate Grasslands, Savannas, and Shrublands
Omaha, NE-- IA	1	29.3%	13.5%	32.6	4.6%	-0.6%	-0.19	-0.07	Mesic	Temperate Grasslands, Savannas, and Shrublands
Omaha, NE-- IA	2	18.7%	33.6%	35.4	4.7%	-1.6%	-0.28	-0.10	Mesic	Temperate Grasslands, Savannas, and Shrublands
Omaha, NE-- IA	3	12.6%	47.9%	37.5	4.7%	-2.2%	-0.34	-0.12	Mesic	Temperate Grasslands, Savannas, and Shrublands

Omaha, NE-- IA	4	8.0%	68.3%	39.3	4.7%	-3.2%	-0.42	-0.15	Mesic	Temperate Grasslands, Savannas, and Shrublands
Omaha, NE-- IA	5	2.9%	87.0%	41.5	4.4%	-3.8%	-0.47	-0.17	Mesic	Temperate Grasslands, Savannas, and Shrublands
Orlando, FL	1	62.1%	13.9%	36.0	4.6%	-0.7%	-0.19	-0.07	Mesic	Temperate Coniferous Forests
Orlando, FL	2	45.7%	29.8%	38.8	4.5%	-1.4%	-0.25	-0.09	Mesic	Temperate Coniferous Forests
Orlando, FL	3	28.6%	48.4%	41.0	4.6%	-2.2%	-0.33	-0.12	Mesic	Temperate Coniferous Forests
Orlando, FL	4	16.7%	67.3%	42.0	4.4%	-3.0%	-0.40	-0.14	Mesic	Temperate Coniferous Forests
Orlando, FL	5	13.8%	84.8%	42.2	3.1%	-2.6%	-0.33	-0.11	Mesic	Temperate Coniferous Forests
Palm Bay-- Melbourne, FL	1	58.6%	14.0%	34.7	4.7%	-0.7%	-0.19	-0.07	Mesic	Temperate Coniferous Forests
Palm Bay-- Melbourne, FL	2	41.3%	29.8%	37.8	4.6%	-1.4%	-0.26	-0.09	Mesic	Temperate Coniferous Forests
Palm Bay-- Melbourne, FL	3	26.5%	49.2%	40.2	4.5%	-2.2%	-0.33	-0.12	Mesic	Temperate Coniferous Forests
Palm Bay-- Melbourne, FL	4	16.0%	66.9%	41.4	4.5%	-3.0%	-0.40	-0.14	Mesic	Temperate Coniferous Forests
Palm Bay-- Melbourne, FL	5	9.0%	83.6%	42.8	4.1%	-3.4%	-0.43	-0.15	Mesic	Temperate Coniferous Forests
Pensacola, FL- -AL	1	57.3%	12.7%	34.5	4.6%	-0.6%	-0.19	-0.06	Mesic	Temperate Coniferous Forests
Pensacola, FL- -AL	2	41.5%	29.7%	37.9	4.6%	-1.4%	-0.26	-0.09	Mesic	Temperate Coniferous Forests
Pensacola, FL- -AL	3	25.0%	47.4%	40.3	4.6%	-2.2%	-0.33	-0.12	Mesic	Temperate Coniferous Forests

Pensacola, FL- -AL	4	10.9%	68.0%	42.8	4.6%	-3.1%	-0.41	-0.14	Mesic	Temperate Coniferous Forests
Pensacola, FL- -AL	5	4.4%	84.0%	42.8	4.5%	-3.8%	-0.47	-0.16	Mesic	Temperate Coniferous Forests
Philadelphia, PA--NJ--DE	1	52.5%	11.6%	31.9	4.6%	-0.6%	-0.18	-0.06	Mesic	Temperate Broadleaf and Mixed Forests
Philadelphia, PA--NJ--DE	2	33.9%	30.0%	35.4	4.6%	-1.4%	-0.26	-0.09	Mesic	Temperate Broadleaf and Mixed Forests
Philadelphia, PA--NJ--DE	3	17.7%	49.2%	38.0	4.6%	-2.3%	-0.34	-0.11	Mesic	Temperate Broadleaf and Mixed Forests
Philadelphia, PA--NJ--DE	4	6.6%	70.4%	40.5	4.6%	-3.2%	-0.43	-0.14	Mesic	Temperate Broadleaf and Mixed Forests
Philadelphia, PA--NJ--DE	5	1.9%	88.0%	42.3	4.2%	-3.6%	-0.45	-0.15	Mesic	Temperate Broadleaf and Mixed Forests
Phoenix-- Mesa, AZ	1	7.1%	12.4%	53.9	4.7%	-0.6%	-0.40	-0.14	Arid	Deserts and Xeric Shrublands
Phoenix-- Mesa, AZ	2	11.5%	32.3%	53.4	4.6%	-1.5%	-0.41	-0.15	Arid	Deserts and Xeric Shrublands
Phoenix-- Mesa, AZ	3	10.5%	51.4%	54.5	4.6%	-2.4%	-0.44	-0.16	Arid	Deserts and Xeric Shrublands
Phoenix-- Mesa, AZ	4	9.3%	67.7%	55.1	4.6%	-3.1%	-0.45	-0.16	Arid	Deserts and Xeric Shrublands
Phoenix-- Mesa, AZ	5	6.8%	83.9%	54.6	4.3%	-3.6%	-0.45	-0.16	Arid	Deserts and Xeric Shrublands
Pittsburgh, PA	1	50.6%	13.0%	28.5	4.6%	-0.6%	-0.19	-0.06	Mesic	Temperate Broadleaf and Mixed Forests
Pittsburgh, PA	2	37.4%	29.9%	31.4	4.6%	-1.4%	-0.26	-0.09	Mesic	Temperate Broadleaf and Mixed Forests
Pittsburgh, PA	3	25.2%	49.3%	34.0	4.6%	-2.3%	-0.34	-0.11	Mesic	Temperate Broadleaf and Mixed Forests
Pittsburgh, PA	4	18.8%	69.3%	36.5	3.9%	-2.7%	-0.36	-0.12	Mesic	Temperate Broadleaf and Mixed Forests
Pittsburgh, PA	5	13.1%	88.1%	38.9	1.9%	-1.6%	-0.20	-0.07	Mesic	Temperate Broadleaf and Mixed Forests

Port St. Lucie, FL	1	52.7%	15.4%	38.3	4.7%	-0.7%	-0.20	-0.07	Mesic	Temperate Coniferous Forests
Port St. Lucie, FL	2	41.3%	28.3%	39.3	4.6%	-1.3%	-0.25	-0.09	Mesic	Temperate Coniferous Forests
Port St. Lucie, FL	3	29.6%	47.7%	40.8	4.5%	-2.2%	-0.33	-0.11	Mesic	Temperate Coniferous Forests
Port St. Lucie, FL	4	14.8%	68.1%	41.2	4.6%	-3.1%	-0.42	-0.14	Mesic	Temperate Coniferous Forests
Port St. Lucie, FL	5	5.8%	83.6%	41.9	4.4%	-3.7%	-0.46	-0.16	Mesic	Temperate Coniferous Forests
Portland, OR-- WA	1	61.7%	13.4%	29.3	4.3%	-0.6%	-0.18	-0.06	Mesic	Temperate Broadleaf and Mixed Forests
Portland, OR-- WA	2	50.8%	32.0%	32.4	4.4%	-1.4%	-0.25	-0.09	Mesic	Temperate Broadleaf and Mixed Forests
Portland, OR-- WA	3	29.4%	51.2%	36.1	4.5%	-2.3%	-0.34	-0.11	Mesic	Temperate Broadleaf and Mixed Forests
Portland, OR-- WA	4	15.6%	67.6%	37.7	4.5%	-3.1%	-0.41	-0.14	Mesic	Temperate Broadleaf and Mixed Forests
Portland, OR-- WA	5	4.4%	88.0%	37.6	3.7%	-3.2%	-0.40	-0.13	Mesic	Temperate Broadleaf and Mixed Forests
Poughkeepsie- -Newburgh, NY	1	63.6%	10.7%	28.1	4.6%	-0.5%	-0.18	-0.06	Mesic	Temperate Broadleaf and Mixed Forests
Poughkeepsie- -Newburgh, NY	2	46.2%	28.9%	31.1	4.5%	-1.3%	-0.25	-0.08	Mesic	Temperate Broadleaf and Mixed Forests
Poughkeepsie- -Newburgh, NY	3	29.0%	49.3%	33.4	4.5%	-2.2%	-0.33	-0.11	Mesic	Temperate Broadleaf and Mixed Forests
Poughkeepsie- -Newburgh, NY	4	15.3%	68.2%	36.1	4.4%	-3.0%	-0.40	-0.13	Mesic	Temperate Broadleaf and Mixed Forests
Poughkeepsie- -Newburgh, NY	5	5.8%	86.0%	38.7	4.1%	-3.5%	-0.43	-0.15	Mesic	Temperate Broadleaf and Mixed Forests
Providence, RI--MA	1	71.0%	12.2%	29.7	4.4%	-0.5%	-0.18	-0.06	Mesic	Temperate Broadleaf and Mixed Forests

Providence, RI--MA	2	56.5%	30.3%	31.9	4.0%	-1.2%	-0.23	-0.08	Mesic	Temperate Broadleaf and Mixed Forests
Providence, RI--MA	3	36.7%	50.5%	34.4	4.0%	-2.0%	-0.29	-0.10	Mesic	Temperate Broadleaf and Mixed Forests
Providence, RI--MA	4	21.4%	71.0%	37.4	3.5%	-2.5%	-0.33	-0.11	Mesic	Temperate Broadleaf and Mixed Forests
Providence, RI--MA	5	14.0%	86.3%	40.7	2.5%	-2.1%	-0.26	-0.09	Mesic	Temperate Broadleaf and Mixed Forests
Raleigh, NC	1	71.0%	11.0%	33.0	4.2%	-0.5%	-0.16	-0.06	Mesic	Temperate Broadleaf and Mixed Forests
Raleigh, NC	2	53.6%	29.6%	36.0	4.3%	-1.3%	-0.24	-0.08	Mesic	Temperate Broadleaf and Mixed Forests
Raleigh, NC	3	31.9%	48.8%	38.8	4.4%	-2.1%	-0.32	-0.11	Mesic	Temperate Broadleaf and Mixed Forests
Raleigh, NC	4	16.2%	67.7%	40.7	4.4%	-3.0%	-0.39	-0.13	Mesic	Temperate Broadleaf and Mixed Forests
Raleigh, NC	5	5.7%	84.4%	41.6	4.3%	-3.6%	-0.45	-0.15	Mesic	Temperate Broadleaf and Mixed Forests
Richmond, VA	1	69.6%	12.6%	30.9	4.5%	-0.6%	-0.18	-0.06	Mesic	Temperate Broadleaf and Mixed Forests
Richmond, VA	2	49.3%	29.1%	33.8	4.6%	-1.3%	-0.25	-0.08	Mesic	Temperate Broadleaf and Mixed Forests
Richmond, VA	3	28.8%	49.0%	36.7	4.6%	-2.3%	-0.34	-0.11	Mesic	Temperate Broadleaf and Mixed Forests
Richmond, VA	4	14.2%	68.5%	38.8	4.5%	-3.1%	-0.41	-0.14	Mesic	Temperate Broadleaf and Mixed Forests
Richmond, VA	5	4.0%	87.4%	41.3	4.1%	-3.6%	-0.44	-0.15	Mesic	Temperate Broadleaf and Mixed Forests
Riverside--San Bernardino, CA	1	26.3%	11.5%	48.1	4.7%	-0.5%	-0.39	-0.10	Arid	Mediterranean Forests, Woodlands, and Scrub

Riverside--San Bernardino, CA	2	28.5%	32.0%	47.5	4.6%	-1.5%	-0.42	-0.10	Arid	Mediterranean Forests, Woodlands, and Scrub
Riverside--San Bernardino, CA	3	25.0%	50.4%	47.9	4.6%	-2.3%	-0.44	-0.11	Arid	Mediterranean Forests, Woodlands, and Scrub
Riverside--San Bernardino, CA	4	19.5%	65.3%	47.8	4.5%	-2.9%	-0.44	-0.11	Arid	Mediterranean Forests, Woodlands, and Scrub
Riverside--San Bernardino, CA	5	11.9%	82.9%	47.5	3.6%	-3.0%	-0.37	-0.09	Arid	Mediterranean Forests, Woodlands, and Scrub
Rochester, NY	1	42.2%	12.3%	30.2	4.6%	-0.6%	-0.18	-0.06	Mesic	Temperate Broadleaf and Mixed Forests
Rochester, NY	2	27.1%	28.7%	32.9	4.7%	-1.3%	-0.26	-0.09	Mesic	Temperate Broadleaf and Mixed Forests
Rochester, NY	3	16.3%	50.1%	34.9	4.4%	-2.2%	-0.33	-0.11	Mesic	Temperate Broadleaf and Mixed Forests
Rochester, NY	4	10.1%	66.5%	36.4	4.4%	-2.9%	-0.39	-0.13	Mesic	Temperate Broadleaf and Mixed Forests
Rochester, NY	5	1.5%	87.0%	38.4	3.4%	-3.0%	-0.37	-0.12	Mesic	Temperate Broadleaf and Mixed Forests
Sacramento, CA	1	26.7%	12.1%	42.1	4.7%	-0.6%	-0.19	-0.07	Mesic	Temperate Grasslands, Savannas, and Shrublands
Sacramento, CA	2	32.0%	32.0%	42.4	4.7%	-1.5%	-0.27	-0.10	Mesic	Temperate Grasslands, Savannas, and Shrublands
Sacramento, CA	3	26.4%	51.6%	43.9	4.6%	-2.4%	-0.35	-0.12	Mesic	Temperate Grasslands, Savannas, and Shrublands
Sacramento, CA	4	19.3%	67.7%	44.5	4.2%	-2.8%	-0.38	-0.14	Mesic	Temperate Grasslands, Savannas, and Shrublands

Sacramento, CA	5	11.7%	84.9%	45.1	2.8%	-2.4%	-0.30	-0.11	Mesic	Temperate Grasslands, Savannas, and Shrublands
Salt Lake City, UT	1	16.2%	14.2%	40.6	4.6%	-0.6%	-0.39	-0.14	Arid	Deserts and Xeric Shrublands
Salt Lake City, UT	2	20.9%	33.3%	40.9	4.6%	-1.5%	-0.41	-0.15	Arid	Deserts and Xeric Shrublands
Salt Lake City, UT	3	21.9%	50.3%	42.4	4.5%	-2.3%	-0.42	-0.15	Arid	Deserts and Xeric Shrublands
Salt Lake City, UT	4	15.7%	68.2%	44.1	4.4%	-3.0%	-0.44	-0.16	Arid	Deserts and Xeric Shrublands
Salt Lake City, UT	5	8.8%	85.1%	45.8	3.6%	-3.1%	-0.38	-0.13	Arid	Deserts and Xeric Shrublands
San Antonio, TX	1	42.2%	13.2%	42.2	4.6%	-0.6%	-0.19	-0.07	Mesic	Temperate Grasslands, Savannas, and Shrublands
San Antonio, TX	2	36.9%	31.8%	44.1	4.6%	-1.5%	-0.27	-0.10	Mesic	Temperate Grasslands, Savannas, and Shrublands
San Antonio, TX	3	28.6%	49.8%	46.1	4.6%	-2.3%	-0.34	-0.12	Mesic	Temperate Grasslands, Savannas, and Shrublands
San Antonio, TX	4	19.2%	67.2%	47.1	4.4%	-2.9%	-0.39	-0.14	Mesic	Temperate Grasslands, Savannas, and Shrublands
San Antonio, TX	5	10.7%	85.8%	48.5	3.0%	-2.5%	-0.31	-0.11	Mesic	Temperate Grasslands, Savannas, and Shrublands
San Diego, CA	1	16.6%	13.3%	42.4	4.6%	-0.6%	-0.39	-0.10	Arid	Mediterranean Forests, Woodlands, and Scrub
San Diego, CA	2	15.7%	31.2%	42.1	4.6%	-1.4%	-0.41	-0.10	Arid	Mediterranean Forests, Woodlands, and Scrub
San Diego, CA	3	10.9%	51.4%	43.3	4.5%	-2.3%	-0.43	-0.11	Arid	Mediterranean Forests, Woodlands, and Scrub

San Diego, CA	4	5.2%	69.3%	44.5	4.6%	-3.2%	-0.46	-0.12	Arid	Mediterranean Forests, Woodlands, and Scrub
San Diego, CA	5	2.5%	85.3%	44.2	4.2%	-3.6%	-0.44	-0.11	Arid	Mediterranean Forests, Woodlands, and Scrub
San Francisco-Oakland, CA	1	52.0%	12.5%	32.7	4.6%	-0.6%	-0.39	-0.10	Arid	Mediterranean Forests, Woodlands, and Scrub
San Francisco-Oakland, CA	2	32.1%	31.0%	35.8	4.6%	-1.4%	-0.41	-0.10	Arid	Mediterranean Forests, Woodlands, and Scrub
San Francisco-Oakland, CA	3	13.0%	52.1%	39.0	4.6%	-2.4%	-0.44	-0.11	Arid	Mediterranean Forests, Woodlands, and Scrub
San Francisco-Oakland, CA	4	4.6%	69.7%	39.4	4.5%	-3.1%	-0.45	-0.11	Arid	Mediterranean Forests, Woodlands, and Scrub
San Francisco-Oakland, CA	5	1.9%	87.0%	38.2	3.8%	-3.3%	-0.40	-0.10	Arid	Mediterranean Forests, Woodlands, and Scrub
San Jose, CA	1	43.6%	12.3%	36.9	4.7%	-0.6%	-0.40	-0.10	Arid	Mediterranean Forests, Woodlands, and Scrub
San Jose, CA	2	23.3%	32.5%	40.1	4.6%	-1.5%	-0.41	-0.10	Arid	Mediterranean Forests, Woodlands, and Scrub
San Jose, CA	3	8.6%	52.4%	42.9	4.6%	-2.4%	-0.44	-0.11	Arid	Mediterranean Forests, Woodlands, and Scrub
San Jose, CA	4	4.0%	67.7%	43.7	4.4%	-3.0%	-0.43	-0.11	Arid	Mediterranean Forests, Woodlands, and Scrub
San Jose, CA	5	1.2%	85.1%	43.9	3.4%	-2.9%	-0.35	-0.09	Arid	Mediterranean Forests, Woodlands, and Scrub

Sarasota-- Bradenton, FL	1	54.6%	15.2%	33.8	4.6%	-0.7%	-0.20	-0.07	Mesic	Temperate Coniferous Forests
Sarasota-- Bradenton, FL	2	39.5%	31.2%	35.7	4.6%	-1.5%	-0.27	-0.09	Mesic	Temperate Coniferous Forests
Sarasota-- Bradenton, FL	3	24.9%	49.1%	37.8	4.6%	-2.3%	-0.34	-0.12	Mesic	Temperate Coniferous Forests
Sarasota-- Bradenton, FL	4	12.7%	68.3%	39.2	4.5%	-3.1%	-0.41	-0.14	Mesic	Temperate Coniferous Forests
Sarasota-- Bradenton, FL	5	2.6%	85.9%	40.3	4.4%	-3.8%	-0.47	-0.16	Mesic	Temperate Coniferous Forests
Seattle, WA	1	67.4%	13.9%	27.4	4.5%	-0.6%	-0.19	-0.06	Mesic	Temperate Coniferous Forests
Seattle, WA	2	53.6%	31.5%	30.7	4.2%	-1.3%	-0.24	-0.08	Mesic	Temperate Coniferous Forests
Seattle, WA	3	35.0%	50.5%	33.6	4.2%	-2.1%	-0.31	-0.11	Mesic	Temperate Coniferous Forests
Seattle, WA	4	22.1%	68.1%	35.0	3.7%	-2.5%	-0.34	-0.12	Mesic	Temperate Coniferous Forests
Seattle, WA	5	9.7%	88.4%	35.1	2.3%	-2.0%	-0.25	-0.09	Mesic	Temperate Coniferous Forests
Springfield, MA--CT	1	66.6%	11.7%	29.8	4.6%	-0.6%	-0.18	-0.06	Mesic	Broadleaf and Mixed Forests
Springfield, MA--CT	2	48.4%	30.1%	33.0	4.5%	-1.4%	-0.26	-0.09	Mesic	Temperate Broadleaf and Mixed Forests
Springfield, MA--CT	3	28.4%	50.0%	35.8	4.6%	-2.3%	-0.34	-0.11	Mesic	Temperate Broadleaf and Mixed Forests
Springfield, MA--CT	4	15.1%	68.7%	37.7	4.5%	-3.1%	-0.41	-0.14	Mesic	Temperate Broadleaf and Mixed Forests
Springfield, MA--CT	5	4.2%	86.0%	39.6	4.0%	-3.5%	-0.43	-0.14	Mesic	Temperate Broadleaf and Mixed Forests

St. Louis, MO-IL	1	51.7%	13.1%	32.9	4.4%	-0.6%	-0.18	-0.06	Mesic	Temperate Grasslands, Savannas, and Shrublands
St. Louis, MO-IL	2	42.2%	32.1%	36.4	4.2%	-1.3%	-0.24	-0.09	Mesic	Temperate Grasslands, Savannas, and Shrublands
St. Louis, MO-IL	3	36.3%	48.5%	39.2	3.6%	-1.7%	-0.26	-0.09	Mesic	Temperate Grasslands, Savannas, and Shrublands
St. Louis, MO-IL	4	30.9%	67.4%	42.1	2.8%	-1.8%	-0.25	-0.09	Mesic	Temperate Grasslands, Savannas, and Shrublands
St. Louis, MO-IL	5	26.6%	87.9%	44.4	1.3%	-1.1%	-0.14	-0.05	Mesic	Temperate Grasslands, Savannas, and Shrublands
Syracuse, NY	1	48.6%	12.3%	30.3	4.6%	-0.6%	-0.18	-0.06	Mesic	Broadleaf and Mixed Forests
Syracuse, NY	2	40.2%	30.7%	34.0	4.5%	-1.4%	-0.26	-0.09	Mesic	Temperate Broadleaf and Mixed Forests
Syracuse, NY	3	27.7%	49.9%	35.9	4.5%	-2.2%	-0.33	-0.11	Mesic	Temperate Broadleaf and Mixed Forests
Syracuse, NY	4	14.3%	67.9%	37.4	4.6%	-3.1%	-0.41	-0.14	Mesic	Temperate Broadleaf and Mixed Forests
Syracuse, NY	5	2.2%	85.5%	39.7	4.2%	-3.6%	-0.45	-0.15	Mesic	Temperate Broadleaf and Mixed Forests
Tampa--St. Petersburg, FL	1	60.9%	13.3%	34.2	4.6%	-0.6%	-0.19	-0.07	Mesic	Coniferous Forests
Tampa--St. Petersburg, FL	2	45.7%	30.6%	37.2	4.5%	-1.4%	-0.26	-0.09	Mesic	Temperate Coniferous Forests
Tampa--St. Petersburg, FL	3	27.4%	49.5%	39.9	4.6%	-2.3%	-0.34	-0.12	Mesic	Temperate Coniferous Forests
Tampa--St. Petersburg, FL	4	14.1%	67.8%	41.3	4.5%	-3.1%	-0.41	-0.14	Mesic	Temperate Coniferous Forests

Tampa--St. Petersburg, FL	5	5.5%	85.6%	42.0	4.2%	-3.6%	-0.45	-0.16	Mesic	Temperate Coniferous Forests
Toledo, OH-- MI	1	45.2%	13.9%	31.0	4.6%	-0.7%	-0.19	-0.06	Mesic	Temperate Broadleaf and Mixed Forests
Toledo, OH-- MI	2	35.9%	31.6%	33.1	4.6%	-1.5%	-0.26	-0.09	Mesic	Temperate Broadleaf and Mixed Forests
Toledo, OH-- MI	3	21.6%	49.6%	35.1	4.6%	-2.3%	-0.34	-0.11	Mesic	Temperate Broadleaf and Mixed Forests
Toledo, OH-- MI	4	11.3%	66.9%	36.9	4.6%	-3.1%	-0.41	-0.14	Mesic	Temperate Broadleaf and Mixed Forests
Toledo, OH-- MI	5	3.1%	86.1%	38.5	4.2%	-3.6%	-0.45	-0.15	Mesic	Temperate Broadleaf and Mixed Forests
Tucson, AZ	1	4.2%	12.4%	53.7	4.5%	-0.6%	-0.38	-0.14	Arid	Deserts and Xeric Shrublands
Tucson, AZ	2	5.7%	30.5%	53.6	4.6%	-1.4%	-0.41	-0.15	Arid	Deserts and Xeric Shrublands
Tucson, AZ	3	6.1%	50.5%	54.2	4.5%	-2.3%	-0.43	-0.15	Arid	Deserts and Xeric Shrublands
Tucson, AZ	4	6.3%	68.0%	53.8	4.5%	-3.1%	-0.45	-0.16	Arid	Deserts and Xeric Shrublands
Tucson, AZ	5	3.9%	83.6%	53.9	4.2%	-3.5%	-0.44	-0.16	Arid	Deserts and Xeric Shrublands
Tulsa, OK	1	13.0%	12.9%	37.2	4.7%	-0.6%	-0.19	-0.07	Mesic	Temperate Grasslands, Savannas, and Shrublands
Tulsa, OK	2	14.1%	31.7%	40.3	4.6%	-1.5%	-0.27	-0.10	Mesic	Temperate Grasslands, Savannas, and Shrublands
Tulsa, OK	3	11.5%	48.0%	42.6	4.7%	-2.2%	-0.34	-0.12	Mesic	Temperate Grasslands, Savannas, and Shrublands
Tulsa, OK	4	9.3%	68.3%	44.6	4.6%	-3.1%	-0.41	-0.15	Mesic	Temperate Grasslands, Savannas, and Shrublands

Tulsa, OK	5	5.7%	86.0%	46.3	4.1%	-3.5%	-0.44	-0.16	Mesic	Temperate Grasslands, Savannas, and Shrublands
Virginia Beach, VA	1	54.6%	13.5%	33.2	4.7%	-0.6%	-0.19	-0.07	Mesic	Temperate Coniferous Forests
Virginia Beach, VA	2	37.2%	30.6%	36.8	4.6%	-1.4%	-0.26	-0.09	Mesic	Temperate Coniferous Forests
Virginia Beach, VA	3	21.7%	48.8%	39.3	4.6%	-2.3%	-0.34	-0.12	Mesic	Temperate Coniferous Forests
Virginia Beach, VA	4	9.2%	66.9%	41.0	4.6%	-3.1%	-0.41	-0.14	Mesic	Temperate Coniferous Forests
Virginia Beach, VA	5	2.1%	85.9%	42.7	4.4%	-3.8%	-0.47	-0.16	Mesic	Temperate Coniferous Forests
Washington, DC--VA--MD	1	66.9%	12.5%	31.3	4.6%	-0.6%	-0.19	-0.06	Mesic	Temperate Broadleaf and Mixed Forests
Washington, DC--VA--MD	2	48.1%	29.9%	34.5	4.5%	-1.4%	-0.25	-0.09	Mesic	Temperate Broadleaf and Mixed Forests
Washington, DC--VA--MD	3	29.4%	49.5%	37.2	4.5%	-2.3%	-0.34	-0.11	Mesic	Temperate Broadleaf and Mixed Forests
Washington, DC--VA--MD	4	16.2%	68.9%	39.1	4.4%	-3.0%	-0.40	-0.13	Mesic	Temperate Broadleaf and Mixed Forests
Washington, DC--VA--MD	5	12.4%	85.7%	39.9	2.4%	-2.0%	-0.26	-0.09	Mesic	Temperate Broadleaf and Mixed Forests
Wichita, KS	1	33.5%	13.9%	36.8	4.6%	-0.6%	-0.19	-0.07	Mesic	Temperate Grasslands, Savannas, and Shrublands
Wichita, KS	2	33.8%	33.0%	38.1	4.6%	-1.5%	-0.27	-0.10	Mesic	Temperate Grasslands, Savannas, and Shrublands
Wichita, KS	3	28.1%	47.0%	39.7	4.6%	-2.2%	-0.33	-0.12	Mesic	Temperate Grasslands, Savannas, and Shrublands

Wichita, KS	4	19.0%	67.6%	41.8	4.2%	-2.8%	-0.37	-0.13	Mesic	Temperate Grasslands, Savannas, and Shrublands
Wichita, KS	5	5.1%	87.6%	43.7	4.3%	-3.7%	-0.46	-0.16	Mesic	Temperate Grasslands, Savannas, and Shrublands
Winston-Salem, NC	1	66.1%	11.4%	32.3	4.5%	-0.5%	-0.18	-0.06	Mesic	Broadleaf and Mixed Forests
Winston-Salem, NC	2	53.4%	28.3%	35.2	4.3%	-1.2%	-0.24	-0.08	Mesic	Temperate Broadleaf and Mixed Forests
Winston-Salem, NC	3	35.1%	47.5%	37.6	4.4%	-2.1%	-0.32	-0.11	Mesic	Temperate Broadleaf and Mixed Forests
Winston-Salem, NC	4	17.9%	66.2%	39.9	4.4%	-2.9%	-0.39	-0.13	Mesic	Temperate Broadleaf and Mixed Forests
Winston-Salem, NC	5	7.1%	87.8%	42.2	3.1%	-2.7%	-0.34	-0.11	Mesic	Temperate Broadleaf and Mixed Forests
Worcester, MA--CT	1	73.9%	11.4%	29.2	4.4%	-0.5%	-0.17	-0.06	Mesic	Temperate Broadleaf and Mixed Forests
Worcester, MA--CT	2	59.2%	30.6%	32.0	3.9%	-1.2%	-0.22	-0.07	Mesic	Temperate Broadleaf and Mixed Forests
Worcester, MA--CT	3	41.8%	50.1%	34.5	3.6%	-1.8%	-0.26	-0.09	Mesic	Temperate Broadleaf and Mixed Forests
Worcester, MA--CT	4	23.1%	70.4%	37.8	3.5%	-2.5%	-0.32	-0.11	Mesic	Temperate Broadleaf and Mixed Forests
Worcester, MA--CT	5	9.0%	85.9%	40.8	3.6%	-3.1%	-0.38	-0.13	Mesic	Temperate Broadleaf and Mixed Forests
Youngstown, OH--PA	1	38.2%	13.3%	29.6	4.7%	-0.6%	-0.19	-0.06	Mesic	Temperate Broadleaf and Mixed Forests
Youngstown, OH--PA	2	21.1%	30.6%	32.9	4.6%	-1.4%	-0.26	-0.09	Mesic	Temperate Broadleaf and Mixed Forests
Youngstown, OH--PA	3	10.2%	47.2%	35.2	4.5%	-2.1%	-0.32	-0.11	Mesic	Temperate Broadleaf and Mixed Forests

Youngstown, OH--PA	4	4.2%	66.6%	37.4	4.6%	-3.1%	-0.41	-0.14	Mesic	Temperate Broadleaf and Mixed Forests
Youngstown, OH--PA	5	0.2%	86.0%	41.1	1.1%	-0.9%	-0.12	-0.04	Mesic	Temperate Broadleaf and Mixed Forests

Supplementary Table 2- Posterior mean estimates (95% confidence intervals) of heat-related mortality in 2005 by region, where heat-related mortality is defined as the excess number of deaths (per 1000 deaths) due to each 10-degree F increases in summer temperature. For more details, see Bobb et al..

Region	Heat-related mortality risk in 2005	LCL	UCL
Industrial			
Midwest	11	-3	25
Northeast (NE)	26	10	43
Northwest (NW)	30	10	50
Southern			
California	46	20	72
Southeast (SE)	10	-9	28
Southwest (SW)	11	-13	35
Upper Midwest	18	-6	43